

# Westmoreland County



**2025-2028 TIP**  
**Westmoreland County PennDOT District 12**



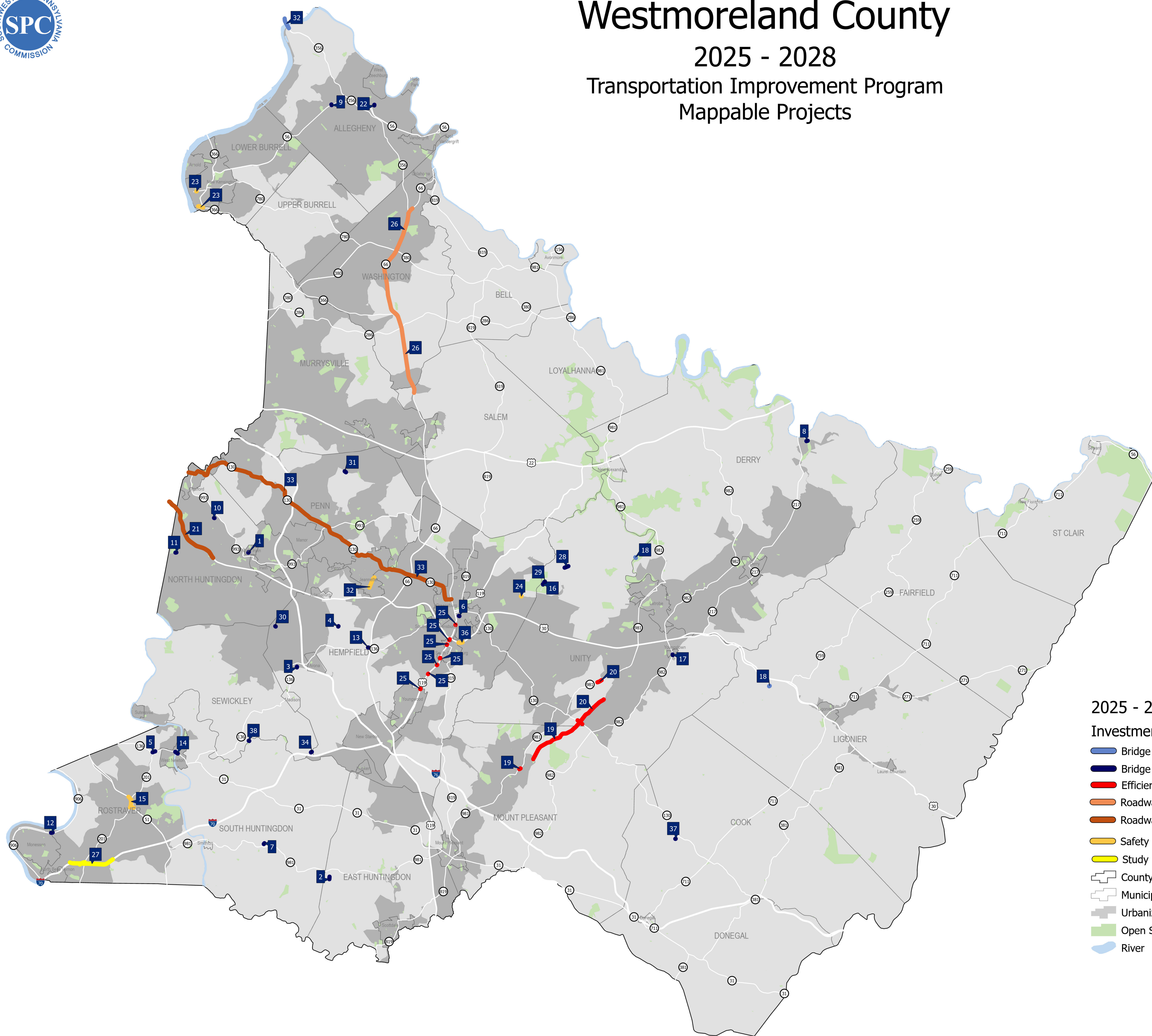
| <u>Map #</u> | <u>Project ID</u> | <u>State Route</u> | <u>Project Title</u>                          | <u>Municipality</u> | <u>Project Sponsor</u> | <u>Investment Category</u> | <u>Programmed Amount (\$)</u> |
|--------------|-------------------|--------------------|---|---------------------|------------------------|----------------------------|-------------------------------|
| 1            | 31554             | 7421               | Fourth Street Bridge                          | North Irwin         | North Irwin Borough    | Bridge Rehab/Replacement   | \$4,000,000                   |
| 2            | 31637             | 3073               | SR 3073 over Meadow Run- DFB                  | E. Huntingdon       | PennDOT                | Bridge Rehab/Replacement   | \$200,000                     |
| 3            | 31689             |                    | Ladysmith Road T-470                          | Hempfield           | PennDOT                | Bridge Rehab/Replacement   | \$2,400,000                   |
| 4            | 31927             |                    | Possum Hollow Road                            | Hempfield           | PennDOT                | Bridge Rehab/Replacement   | \$1,151,000                   |
| 5            | 69248             | 136                | PA 136 over Pollock Run                       | Rostraver           | PennDOT                | Bridge Rehab/Replacement   | \$3,300,000                   |
| 6            | 73028             | 7302               | Brewery Street Bridge                         | Greensburg          | PennDOT                | Bridge Rehab/Replacement   | \$750,000                     |
| 7            | 74261             | 3035               | SR 3035 over Barren Run- DFB                  | S. Huntingdon       | PennDOT                | Bridge Rehab/Replacement   | \$200,000                     |
| 8            | 74437             | 1014               | SR 1014 over McGee Run                        | Derry               | PennDOT                | Bridge Rehab/Replacement   | \$1,500,000                   |
| 9            | 83686             | 4073               | SR 4073 over PA 56                            | Allegheny           | PennDOT                | Bridge Rehab/Replacement   | \$5,075,000                   |
| 10           | 89066             | 4019               | SR 4019 over Brush Creek                      | N Huntingdon        | PennDOT                | Bridge Rehab/Replacement   | \$3,000,000                   |
| 11           | 91121             | 3024               | SR 3024 over Br Long Run- DFB                 | N Huntingdon        | PennDOT                | Bridge Rehab/Replacement   | \$200,000                     |
| 12           | 91136             | 906                | PA 906 ov Trib Mon River                      | Rostraver           | PennDOT                | Bridge Rehab/Replacement   | \$1,200,000                   |
| 13           | 98865             | 3044               | SR 3044 ov Ltl Sewickley Crk                  | Hempfield           | PennDOT                | Bridge Rehab/Replacement   | \$1,200,000                   |
| 14           | 98869             | 136                | West Newton Bridge                            | West Newton         | PennDOT                | Bridge Rehab/Replacement   | \$17,000,000                  |
| 15           | 105350            | 51                 | PA 201 Ramp to PA 51 Bridges                  | Rostraver           | PennDOT                | Safety                     | \$3,750,000                   |
| 16           | 105818            | 1049               | SR 1049 ov Br Ltl Crabtree Ck-DFB             | Unity               | PennDOT                | Bridge Rehab/Replacement   | \$200,000                     |
| 17           | 105837            | 982                | PA 982 over Sawmill Run                       | Youngstown          | PennDOT                | Bridge Rehab/Replacement   | \$1,400,000                   |
| 18           | 106406            | 7204               | West Co Local Br Preservation                 | Derry               | PennDOT                | Bridge Preservation        | \$2,850,000                   |
| 19           | 108010            | 981                | LVTIP: Norvelt to Pleasant Unity              | Mt. Pleasant        | PennDOT                | Efficiency / Operations    | \$29,670,880                  |
| 20           | 108140            | 981                | LVTIP: Pleasant Unity to Airport              | Unity               | PennDOT                | Efficiency / Operations    | \$57,526,882                  |
| 21           | 110900            | 30                 | US 30 Corridor Impvmts - Western Section      | N Huntingdon        | PennDOT                | Roadway Reconstruction     | \$29,800,000                  |
| 22           | 112902            | 4091               | SR 4091 ov Stream to Kiski River              | Allegheny           | PennDOT                | Bridge Rehab/Replacement   | \$500,000                     |
| 23           | 113267            | 4087               | New Kensington Corridor                       | New Kensingt        | PennDOT                | Safety                     | \$5,500,000                   |
| 24           | 113823            | 1026               | Donohoe Road/Georges Station Intersection     | Hempfield           | PennDOT                | Safety                     | \$8,850,000                   |
| 25           | 114560            | 119                | 119 SW Greensburg CMAQ                        | S. Greensburg       | PennDOT                | Efficiency / Operations    | \$2,250,000                   |
| 26           | 116179            | 66                 | PA 66 Pavement Preservation                   | Delmont             | PennDOT                | Roadway Preservation       | \$10,850,000                  |
| 27           | 116461            | 70                 | I-70 @ PA 201 Interchange PEL                 | Rostraver           | PennDOT                | Study                      | \$1,500,000                   |
| 28           | 116465            | 1049               | SR 1049 over Br Little Crabtree Creek (Seg40) | Unity               | PennDOT                | Bridge Rehab/Replacement   | \$200,000                     |
| 29           | 116467            | 1049               | SR 1049 over Br Little Crabtree Creek (Seg20) | Unity               | PennDOT                | Bridge Rehab/Replacement   | \$200,000                     |
| 30           | 116470            | 3063               | SR 3063 over Andrews Run-DFB                  | Hempfield           | PennDOT                | Bridge Rehab/Replacement   | \$200,000                     |
| 31           | 116471            | 4041               | SR 4041 over Br of Brush Run-DFB              | Penn                | PennDOT                | Bridge Rehab/Replacement   | \$200,000                     |
| 32           | 116790            | 356                | Freeport Bridge Truss Preservation            | Allegheny           | PennDOT                | Bridge Preservation        | \$1,000,000                   |
| 33           | 119638            | 130                | PA 130 Corridor Review & Improvements         | Trafford            | PennDOT                | Roadway Reconstruction     | \$1,000,000                   |
| 34           | 120056            | 3014               | SR 3014 over Sewickley Creek                  | Hempfield           | PennDOT                | Bridge Rehab/Replacement   | \$1,100,000                   |
| 35           | 120639            | 4006               | SR 4006 Flashing Beacon                       | Jeannette           | PennDOT                | Safety                     | \$450,000                     |
| 36           | 120641            | 30                 | US 30 at Cedar Street Improvements            | Hempfield           | PennDOT                | Safety                     | \$200,000                     |
| 37           | 121009            | 7205               | T-880 Bridge #2, Donegal Twp                  | Donegal             | PennDOT                | Bridge Rehab/Replacement   | \$1,300,000                   |
| 38           | 121011            | 7215               | Bells Mill Bridge                             | Sewickley           | PennDOT                | Bridge Rehab/Replacement   | \$500,000                     |



# Westmoreland County

2025 - 2028

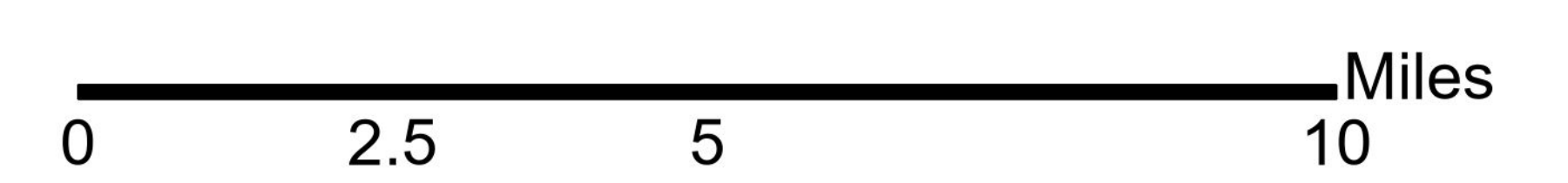
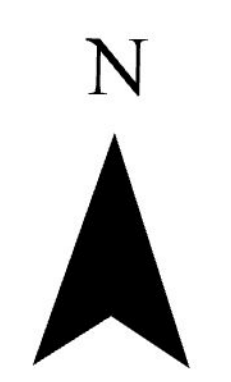
Transportation Improvement Program  
Mappable Projects



### 2025 - 2028 TIP Projects

#### Investment Category

- Bridge Preservation
- Bridge Rehab/Replacement
- Efficiency/Operations
- Roadway Preservation
- Roadway Reconstruction
- Safety
- Study
- County Boundary
- Municipal Boundary
- Urbanized Area
- Open Space
- River



## Code Definitions

| Funding Code | Funding Category  |
|--------------|---|
| 73           | State Signals   |
| 179          | County Act 26 Bridges   |
| 183          | Local Bridges   |
| 185          | State Highway Bridges   |
| 581          | State Highway   |
| APL          | Appalachian Regional Program                                      |
| BRIP         | Bridge Investment Program   |
| BOF          | Bridge - Off System   |
| CAQ          | Congestion Mitigation and Air Quality                             |
| CRP          | Carbon Reduction Program  |
| CRPU         | Carbon Reduction Program Urban                                    |
| D4R          | Interstate Maintenance Discretionary                              |
| fCAQ         | State Guidance Transit Flex Project - Surface Transportation      |
| HSIP         | Regional Surface Transportation - Safety                          |
| sHSIP        | State Surface Transportation - Safety                             |
| IM           | Interstate Maintenance  |
| LOC          | Local   |
| NHPP         | National Highway Performance Program                              |
| OTH          | Other   |
| PRI          | Private   |
| PRTCT        | PROTECT Program (state managed)                                   |
| RAISE        | Rebuilding American Infrastructure with Sustainability and Equity |
| RRX          | Surface Transportation - RRXing Elimination of Hazards            |
| s185         | Spike - State Highway Bridges                                     |
| e581         | Transportation Infrastructure Investment Fund                     |
| s581         | Spike - State Highway Safety                                      |
| sCRP         | Spike- Carbon Reduction Program                                   |
| sHSIP        | Spike - Safety  |
| sHVRU        | Spike - Vulnerable Road Users                                     |
| sNHPP        | Spike - National Highway Performance Program                      |
| sSTP         | Spike - Surface Transportation                                    |
| STP          | Surface Transportation - Any Area in State                        |
| STU          | Surface Transportation - Urban                                    |
| SXF          | Special Project - Federal Earmark, source not specified           |
| TAP          | Transportation Alternatives Program (Statewide)                   |
| TAU          | Transportation Alternatives Urban (Regional)                      |

## Code Definitions

| <b>Investment Code</b> | <b>Investment Category</b>                           |
|------------------------|--|
| BRDG PRESV             | Bridge Preservation                                  |
| BRDG RECON             | Bridge Reconstruction / Replacement                  |
| EF OPS                 | Efficiency / Operations                              |
| INT COMPL              | Interchange Upgrade / Completion                     |
| MULTIMOD               | Multimodal / Intermodal / Other Modes                |
| NEW CAP                | New Roadways / Interchanges / Bridges                |
| OTHER                  | Other / Miscellaneous                                |
| PED BIKE               | Pedestrian & Bicycle                                 |
| ROAD PRESV             | Roadway Preservation                                 |
| ROAD RECON             | Roadway Reconstruction                               |
| SAFE                   | Safety   |
| SLIDES                 | Slide Correction                                     |
| TDM                    | Travel Demand Management                             |
| TRANSIT FLEET          | Public Transportation - Fleet Replacement / Upgrades |
| TRANSIT OPS            | Public Transportation - Operations                   |



**2025-2028 TIP**

**Westmoreland County PennDOT District 12**

| <u>SR</u> | <u>Project Name</u>  | <u>Project #</u> | <u>Municipality</u> | <u>Sponsor</u>   | <u>Map #</u> |
|-----------|----------------------|------------------|---------------------|------------------|--------------|
| 7421      | Fourth Street Bridge | 31554            | North Irwin         | North Irwin Boro | 1            |

**Est Let Date** Air Quality Invest Category **Location:** BMS# 64 7421 0993 0003  
 1/30/2025 Exempt Bridge Rehab/Replacement

**Description:** This project is the replacement of the structure carrying State Route 7421 (Fourth Street) over Conrail Railroad in North Irwin Borough, Westmoreland County.\*No new capacity will be added\*

| PROJECT FUNDING | FUND CODE | 2025               | 2026               | 2027 | 2028 | TOTAL              |
|-----------------|-----------|--------------------|--------------------|------|------|--------------------|
| Construction    |           |                    |                    |      |      |                    |
| Federal         | BOF       | \$2,000,000        | \$2,000,000        |      |      | \$4,000,000        |
|                 |           | <b>\$2,000,000</b> | <b>\$2,000,000</b> |      |      | <b>\$4,000,000</b> |

**2025 - 2028 Total Programmed Amount \$4,000,000**

| <u>SR</u> | <u>Project Name</u>          | <u>Project #</u> | <u>Municipality</u> | <u>Sponsor</u> | <u>Map #</u> |
|-----------|------------------------------|------------------|---------------------|----------------|--------------|
| 3073      | SR 3073 over Meadow Run- DFB | 31637            | East Huntingdon     | PennDOT        | 2            |

**Est Let Date** Air Quality Invest Category **Location:** SR 3073 (Wesley Chapel Road) over Meadow RunEast Huntingdon Twp , Westmoreland CountyBridge Replacement  
 Exempt Bridge Rehab/Replacement

**Description:** SR 3073 (Wesley Chapel Road) over Meadow RunEast Huntingdon Twp , Westmoreland CountyBridge Replacement

| PROJECT FUNDING | FUND CODE | 2025 | 2026 | 2027             | 2028 | TOTAL            |
|-----------------|-----------|------|------|------------------|------|------------------|
| Utilities       |           |      |      |                  |      |                  |
| State           | 185       |      |      | \$25,000         |      | \$25,000         |
| Right of Way    |           |      |      |                  |      |                  |
| State           | 185       |      |      | \$25,000         |      | \$25,000         |
| Construction    |           |      |      |                  |      |                  |
| State           | 185       |      |      | \$150,000        |      | \$150,000        |
|                 |           |      |      | <b>\$200,000</b> |      | <b>\$200,000</b> |

**2025 - 2028 Total Programmed Amount \$200,000**



**2025-2028 TIP**

**Westmoreland County PennDOT District 12**

| <u>SR</u> | <u>Project Name</u>  | <u>Project #</u> | <u>Municipality</u> | <u>Sponsor</u> | <u>Map #</u> |
|-----------|----------------------|------------------|---------------------|----------------|--------------|
|           | Ladysmith Road T-470 | 31689            | Hempfield           | PennDOT        | 3            |

**Est Let Date** Air Quality Invest Category **Location:** OVER LITTLE SEWICKLEY CR : HEMPFIELD TWP  
 2/3/2028 Exempt Bridge Rehab/Replacement

**Description:** This project is for the rehabilitation/replacement of the structure carrying T-470 Ladysmith Road over Little Sewickley Creek in Hempfield Township, Westmoreland County.\*No new capacity will be added\*

| PROJECT FUNDING                            | FUND CODE | 2025 | 2026 | 2027             | 2028               | TOTAL              |
|--|-----------|------|------|------------------|--------------------|--------------------|
| Final Design                               |           |      |      |                  |                    |                    |
| Federal                                    | BOF       |      |      | \$500,000        |                    | \$500,000          |
| Utilities                                  |           |      |      |                  |                    |                    |
| Federal                                    | BOF       |      |      | \$200,000        |                    | \$200,000          |
| Right of Way                               |           |      |      |                  |                    |                    |
| Federal                                    | BOF       |      |      | \$200,000        |                    | \$200,000          |
| Construction                               |           |      |      |                  |                    |                    |
| Federal                                    | BRIP      |      |      |                  | \$1,500,000        | \$1,500,000        |
|  |           |      |      | <b>\$900,000</b> | <b>\$1,500,000</b> | <b>\$2,400,000</b> |
| <b>2025 - 2028 Total Programmed Amount</b> |           |      |      |                  |                    | <b>\$2,400,000</b> |



**2025-2028 TIP**

**Westmoreland County PennDOT District 12**

| <u>SR</u> | <u>Project Name</u> | <u>Project #</u> | <u>Municipality</u> | <u>Sponsor</u> | <u>Map #</u> |
|-----------|---------------------|------------------|---------------------|----------------|--------------|
|           | Possum Hollow Road  | 31927            | Hempfield           | PennDOT        | 4            |

**Est Let Date** Air Quality Invest Category **Location:** OV TRIB L SEWICKLEY CK : HEMPFIELD TWP  
 12/13/2029 Exempt Bridge Rehab/Replacement

**Description:** This project is for the rehabilitation/replacement of the structure carrying Possum Hollow Road over a tributary of Little Sewickley Creek in Hempfield Township, Westmoreland County.\*No new capacity will be added\*

| PROJECT FUNDING         | FUND CODE | 2025             | 2026             | 2027 | 2028 | TOTAL              |
|-------------------------|-----------|------------------|------------------|------|------|--------------------|
| Preliminary Engineering |           |                  |                  |      |      |                    |
| Federal                 | BOF       | \$350,000        |                  |      |      | \$350,000          |
| Final Design            |           |                  |                  |      |      |                    |
| Federal                 | BOF       |                  | \$501,000        |      |      | \$501,000          |
| Utilities               |           |                  |                  |      |      |                    |
| Federal                 | STP       |                  | \$150,000        |      |      | \$150,000          |
| Right of Way            |           |                  |                  |      |      |                    |
| Federal                 | STP       |                  | \$150,000        |      |      | \$150,000          |
|                         |           | <b>\$350,000</b> | <b>\$801,000</b> |      |      | <b>\$1,151,000</b> |

**2025 - 2028 Total Programmed Amount \$1,151,000**

| <u>SR</u> | <u>Project Name</u>     | <u>Project #</u> | <u>Municipality</u> | <u>Sponsor</u> | <u>Map #</u> |
|-----------|-------------------------|------------------|---------------------|----------------|--------------|
| 136       | PA 136 over Pollock Run | 69248            | Rostraver           | PennDOT        | 5            |

**Est Let Date** Air Quality Invest Category **Location:** Rostraver Township, Westmoreland64-0136-0030-1836  
 9/12/2024 Exempt Bridge Rehab/Replacement

**Description:** This project is the replacement of the structure carrying PA 136 (West Newton Road) over Pollock Run in Rostraver Township, Westmoreland County.

| PROJECT FUNDING | FUND CODE | 2025               | 2026 | 2027 | 2028 | TOTAL              |
|-----------------|-----------|--------------------|------|------|------|--------------------|
| Construction    |           |                    |      |      |      |                    |
| Federal         | BRIP      | \$3,300,000        |      |      |      | \$3,300,000        |
|                 |           | <b>\$3,300,000</b> |      |      |      | <b>\$3,300,000</b> |

**2025 - 2028 Total Programmed Amount \$3,300,000**





**2025-2028 TIP**

**Westmoreland County PennDOT District 12**

| <u>SR</u> | <u>Project Name</u>   | <u>Project #</u> | <u>Municipality</u> | <u>Sponsor</u> | <u>Map #</u> |
|-----------|-----------------------|------------------|---------------------|----------------|--------------|
| 7302      | Brewery Street Bridge | 73028            | Greensburg          | PennDOT        | 6            |

**Est Let Date** Air Quality Invest Category **Location:** Brewery Street Bridge over Jacks Run Creek, City of Greensburg in Westmoreland County  
 2/17/2028 Exempt Bridge Rehab/Replacement

**Description:** This project consists of the rehabilitation/replacement of Brewery Street Bridge over Jacks Run Creek, City of Greensburg in Westmoreland County.\*No new capacity will be added\*

| PROJECT FUNDING                            | FUND CODE | 2025             | 2026 | 2027             | 2028 | TOTAL            |
|--|-----------|------------------|------|------------------|------|------------------|
| Final Design                               |           |                  |      |                  |      |                  |
| Federal                                    | BOF       | \$350,000        |      |                  |      | \$350,000        |
| Utilities                                  |           |                  |      |                  |      |                  |
| Federal                                    | BOF       |                  |      | \$200,000        |      | \$200,000        |
| Right of Way                               |           |                  |      |                  |      |                  |
| Federal                                    | BOF       |                  |      | \$200,000        |      | \$200,000        |
|  |           | <b>\$350,000</b> |      | <b>\$400,000</b> |      | <b>\$750,000</b> |
| <b>2025 - 2028 Total Programmed Amount</b> |           |                  |      |                  |      | <b>\$750,000</b> |



**2025-2028 TIP**

**Westmoreland County PennDOT District 12**

| <u>SR</u> | <u>Project Name</u>          | <u>Project #</u> | <u>Municipality</u> | <u>Sponsor</u> | <u>Map #</u> |
|-----------|------------------------------|------------------|---------------------|----------------|--------------|
| 3035      | SR 3035 over Barren Run- DFB | 74261            | South Huntingdon    | PennDOT        | 7            |

**Est Let Date** Air Quality Invest Category **Location:** SR 3035 over Barren Run South Huntingdon Township, Westmoreland County Bridge Replacement  
 Exempt Bridge Rehab/Replacement

**Description:** This project is the replacement of the structure carrying SR 3035 over Barren Run in South Huntingdon Township, Westmoreland County

| PROJECT FUNDING | FUND CODE | 2025 | 2026 | 2027             | 2028 | TOTAL            |
|-----------------|-----------|------|------|------------------|------|------------------|
| Utilities       |           |      |      |                  |      |                  |
| State           | 185       |      |      | \$25,000         |      | \$25,000         |
| Right of Way    |           |      |      |                  |      |                  |
| State           | 185       |      |      | \$25,000         |      | \$25,000         |
| Construction    |           |      |      |                  |      |                  |
| State           | 185       |      |      | \$150,000        |      | \$150,000        |
|                 |           |      |      | <b>\$200,000</b> |      | <b>\$200,000</b> |

**2025 - 2028 Total Programmed Amount \$200,000**

| <u>SR</u> | <u>Project Name</u>    | <u>Project #</u> | <u>Municipality</u> | <u>Sponsor</u> | <u>Map #</u> |
|-----------|------------------------|------------------|---------------------|----------------|--------------|
| 1014      | SR 1014 over McGee Run | 74437            | Derry               | PennDOT        | 8            |

**Est Let Date** Air Quality Invest Category **Location:** SR 1014 (Torrance Road) over McGee Run , Derry Township, Westmoreland County, BMS# 64 1014 0010 1868  
 11/2/2028 Exempt Bridge Rehab/Replacement

**Description:** This project is the rehabilitation/replacement of the structure carrying SR 1014 (Torrance Road) over McGee Run in Derry Township, Westmoreland County.  
 \*No new capacity will be added\*

| PROJECT FUNDING | FUND CODE | 2025               | 2026             | 2027 | 2028 | TOTAL              |
|-----------------|-----------|--------------------|------------------|------|------|--------------------|
| Construction    |           |                    |                  |      |      |                    |
| State           | 185       | \$1,000,000        | \$500,000        |      |      | \$1,500,000        |
|                 |           | <b>\$1,000,000</b> | <b>\$500,000</b> |      |      | <b>\$1,500,000</b> |

**2025 - 2028 Total Programmed Amount \$1,500,000**



**2025-2028 TIP**

**Westmoreland County PennDOT District 12**

| <u>SR</u> | <u>Project Name</u> | <u>Project #</u> | <u>Municipality</u> | <u>Sponsor</u> | <u>Map #</u> |
|-----------|---------------------|------------------|---------------------|----------------|--------------|
| 4073      | SR 4073 over PA 56  | 83686            | Allegheny           | PennDOT        | 9            |

**Est Let Date** Air Quality Invest Category **Location:** BMS: 64 4073 0100 2053

4/26/2029 Exempt Bridge Rehab/Replacement

**Description:** This project is for the rehabilitation of the structure on State Route 4073 (White Cloud Road) over PA 56 in Allegheny Township, Westmoreland County.\*No new capacity will be added\*

| PROJECT FUNDING                            | FUND CODE | 2025               | 2026 | 2027               | 2028               | TOTAL              |
|--|-----------|--------------------|------|--------------------|--------------------|--------------------|
| Final Design                               |           |                    |      |                    |                    |                    |
| Federal                                    | STP       | \$575,000          |      |                    |                    | \$575,000          |
| Utilities                                  |           |                    |      |                    |                    |                    |
| Federal                                    | STP       | \$250,000          |      |                    |                    | \$250,000          |
| Right of Way                               |           |                    |      |                    |                    |                    |
| Federal                                    | STP       | \$250,000          |      |                    |                    | \$250,000          |
| Construction                               |           |                    |      |                    |                    |                    |
| State                                      | 581       |                    |      | \$2,000,000        | \$2,000,000        | \$4,000,000        |
|  |           | <b>\$1,075,000</b> |      | <b>\$2,000,000</b> | <b>\$2,000,000</b> | <b>\$5,075,000</b> |
| <b>2025 - 2028 Total Programmed Amount</b> |           |                    |      |                    |                    | <b>\$5,075,000</b> |



**2025-2028 TIP**

**Westmoreland County PennDOT District 12**

| <u>SR</u> | <u>Project Name</u>      | <u>Project #</u> | <u>Municipality</u> | <u>Sponsor</u> | <u>Map #</u> |
|-----------|--------------------------|------------------|---------------------|----------------|--------------|
| 4019      | SR 4019 over Brush Creek | 89066            | North Huntingdon    | PennDOT        | 10           |

**Est Let Date** Air Quality Invest Category **Location:** BMS# 64 4019 0070 0068

5/22/2025 Exempt Bridge Rehab/Replacement

**Description:** This project is the replacement/rehabilitation of the structure carrying State Route 4019 (Ardara Road) over Brush Creek in North Huntingdon Township, Westmoreland County.

\*No new capacity will be added\*

| PROJECT FUNDING                            | FUND CODE | 2025             | 2026             | 2027               | 2028 | TOTAL              |
|--|-----------|------------------|------------------|--------------------|------|--------------------|
| Final Design                               |           |                  |                  |                    |      |                    |
| Federal                                    | STP       | \$750,000        |                  |                    |      | \$750,000          |
| Utilities                                  |           |                  |                  |                    |      |                    |
| State                                      | 185       |                  | \$250,000        |                    |      | \$250,000          |
| Right of Way                               |           |                  |                  |                    |      |                    |
| State                                      | 185       |                  | \$250,000        |                    |      | \$250,000          |
| Construction                               |           |                  |                  |                    |      |                    |
| Federal                                    | STP       |                  |                  | \$1,750,000        |      | \$1,750,000        |
|  |           | <b>\$750,000</b> | <b>\$500,000</b> | <b>\$1,750,000</b> |      | <b>\$3,000,000</b> |
| <b>2025 - 2028 Total Programmed Amount</b> |           |                  |                  |                    |      | <b>\$3,000,000</b> |



**2025-2028 TIP**

**Westmoreland County PennDOT District 12**

| <u>SR</u> | <u>Project Name</u>           | <u>Project #</u> | <u>Municipality</u> | <u>Sponsor</u> | <u>Map #</u> |
|-----------|-------------------------------|------------------|---------------------|----------------|--------------|
| 3024      | SR 3024 over Br Long Run- DFB | 91121            | North Huntingdon    | PennDOT        | 11           |

**Est Let Date**   **Air Quality**   **Invest Category**   **Location:** BMS: 64 3024 0020 0000  
 Exempt   Bridge Rehab/Replacement

**Description:** This project is for the rehabilitation of the structure carrying SR 3024 (Colonial Manor Road) over a branch of Long Run in North Huntingdon Township, Westmoreland County. \*No new capacity will be added\*

| PROJECT FUNDING                            | FUND CODE | 2025             | 2026      | 2027 | 2028             | TOTAL            |
|--|-----------|------------------|-----------|------|------------------|------------------|
| Utilities                                  |           |                  |           |      |                  |                  |
| State                                      | 185       |                  | \$25,000  |      |                  | \$25,000         |
| Right of Way                               |           |                  |           |      |                  |                  |
| State                                      | 185       |                  | \$25,000  |      |                  | \$25,000         |
| Construction                               |           |                  |           |      |                  |                  |
| State                                      | 185       |                  | \$150,000 |      |                  | \$150,000        |
|  |           | <b>\$200,000</b> |           |      | <b>\$200,000</b> |                  |
| <b>2025 - 2028 Total Programmed Amount</b> |           |                  |           |      |                  | <b>\$200,000</b> |



**2025-2028 TIP**

**Westmoreland County PennDOT District 12**

| <u>SR</u> | <u>Project Name</u>      | <u>Project #</u> | <u>Municipality</u> | <u>Sponsor</u> | <u>Map #</u> |
|-----------|--------------------------|------------------|---------------------|----------------|--------------|
| 906       | PA 906 ov Trib Mon River | 91136            | Rostraver           | PennDOT        | 12           |

**Est Let Date**   **Air Quality**   **Invest Category**   **Location:** BMS ID# 64 0906 0100 1526  
 Exempt   Bridge Rehab/Replacement

**Description:** This project is the replacement of the structure carrying PA 906 over a tributary of the Monongahela River in Rostraver Township, Westmoreland County.\*No new capacity will be added\*

| PROJECT FUNDING                            | FUND CODE | 2025             | 2026 | 2027 | 2028             | TOTAL              |
|--|-----------|------------------|------|------|------------------|--------------------|
| Preliminary Engineering                    |           |                  |      |      |                  |                    |
| State                                      | 185       | \$500,000        |      |      |                  | \$500,000          |
| Final Design                               |           |                  |      |      |                  |                    |
| State                                      | 185       |                  |      |      | \$400,000        | \$400,000          |
| Utilities                                  |           |                  |      |      |                  |                    |
| State                                      | 185       |                  |      |      | \$150,000        | \$150,000          |
| Right of Way                               |           |                  |      |      |                  |                    |
| State                                      | 185       |                  |      |      | \$150,000        | \$150,000          |
|  |           | <b>\$500,000</b> |      |      | <b>\$700,000</b> | <b>\$1,200,000</b> |
| <b>2025 - 2028 Total Programmed Amount</b> |           |                  |      |      |                  | <b>\$1,200,000</b> |



**2025-2028 TIP**

**Westmoreland County PennDOT District 12**

| <u>SR</u> | <u>Project Name</u>          | <u>Project #</u> | <u>Municipality</u> | <u>Sponsor</u> | <u>Map #</u> |
|-----------|------------------------------|------------------|---------------------|----------------|--------------|
| 3044      | SR 3044 ov Ltl Sewickley Crk | 98865            | Hempfield           | PennDOT        | 13           |

**Est Let Date** Air Quality Invest Category **Location:** SR 3044 (Bobcock Lane) over Little Sewickley Creek Hempfield Township, Westmoreland County  
 6/10/2027 Exempt Bridge Rehab/Replacement BMS# 64 3044 0010 0377

**Description:** This project is the replacement/rehabilitation of the structure carrying State Route 3044 (Bobcock Lane) over Little Sewickley Creek in Hempfield Township, Westmoreland County.\*No new capacity will be added\*

| PROJECT FUNDING         | FUND CODE | 2025             | 2026 | 2027             | 2028             | TOTAL              |
|-------------------------|-----------|------------------|------|------------------|------------------|--------------------|
| Preliminary Engineering |           |                  |      |                  |                  |                    |
| State                   | 581       | \$500,000        |      |                  |                  | \$500,000          |
| Final Design            |           |                  |      |                  |                  |                    |
| State                   | 185       |                  |      | \$400,000        |                  | \$400,000          |
| Utilities               |           |                  |      |                  |                  |                    |
| State                   | 185       |                  |      |                  | \$150,000        | \$150,000          |
| Right of Way            |           |                  |      |                  |                  |                    |
| State                   | 185       |                  |      |                  | \$150,000        | \$150,000          |
|                         |           | <b>\$500,000</b> |      | <b>\$400,000</b> | <b>\$300,000</b> | <b>\$1,200,000</b> |

**2025 - 2028 Total Programmed Amount \$1,200,000**



**2025-2028 TIP**

**Westmoreland County PennDOT District 12**

| <u>SR</u> | <u>Project Name</u> | <u>Project #</u> | <u>Municipality</u> | <u>Sponsor</u> | <u>Map #</u> |
|-----------|---------------------|------------------|---------------------|----------------|--------------|
| 136       | West Newton Bridge  | 98869            | West Newton         | PennDOT        | 14           |

**Est Let Date** Air Quality Invest Category **Location:** BMS# 64 0136 0050 1938

1/30/2025 Exempt Bridge Rehab/Replacement

**Description:** This project is the Rehabilitation of the structure carrying PA 136 (Main Street) over Youghiogheny River in West Newton Borough, Westmoreland County.\*No new capacity will be added\*

| PROJECT FUNDING | FUND CODE | 2025                | 2026               | 2027 | 2028 | TOTAL               |
|-----------------|-----------|---------------------|--------------------|------|------|---------------------|
| Construction    |           |                     |                    |      |      |                     |
| Federal         | BRIP      | \$8,000,000         | \$4,000,000        |      |      | \$12,000,000        |
|                 | STP       | \$1,000,000         | \$1,000,000        |      |      | \$2,000,000         |
|                 | STU       | \$3,000,000         |                    |      |      | \$3,000,000         |
|                 |           | <b>\$12,000,000</b> | <b>\$5,000,000</b> |      |      | <b>\$17,000,000</b> |

**2025 - 2028 Total Programmed Amount \$17,000,000**





**2025-2028 TIP**

**Westmoreland County PennDOT District 12**

| <u>SR</u> | <u>Project Name</u>          | <u>Project #</u> | <u>Municipality</u> | <u>Sponsor</u> | <u>Map #</u> |
|-----------|------------------------------|------------------|---------------------|----------------|--------------|
| 51        | PA 201 Ramp to PA 51 Bridges | 105350           | Rostraver           | PennDOT        | 15           |

**Est Let Date** 8/21/2025    **Air Quality** Exempt    **Invest Category** Safety    **Location:** SR 201 Segments 0100-0110SR 8011 Segments 0250-0260Rostraver Township, Westmoreland County

**Description:** This project is for intersection safety improvements at the PA 201 & Ramp SR 8011 to PA 51 South intersections in Rostraver Township, Westmoreland County.

| PROJECT FUNDING                            | FUND CODE | 2025               | 2026 | 2027 | 2028               | TOTAL              |
|--|-----------|--------------------|------|------|--------------------|--------------------|
| Preliminary Engineering                    |           |                    |      |      |                    |                    |
| Federal                                    | NHPP      | \$1,500,000        |      |      |                    | \$1,500,000        |
| Final Design                               |           |                    |      |      |                    |                    |
| Federal                                    | NHPP      |                    |      |      | \$750,000          | \$750,000          |
| Utilities                                  |           |                    |      |      |                    |                    |
| Federal                                    | NHPP      |                    |      |      | \$750,000          | \$750,000          |
| Right of Way                               |           |                    |      |      |                    |                    |
| Federal                                    | NHPP      |                    |      |      | \$750,000          | \$750,000          |
|  |           | <b>\$1,500,000</b> |      |      | <b>\$2,250,000</b> | <b>\$3,750,000</b> |
| <b>2025 - 2028 Total Programmed Amount</b> |           |                    |      |      |                    | <b>\$3,750,000</b> |



**2025-2028 TIP**

**Westmoreland County PennDOT District 12**

| <u>SR</u> | <u>Project Name</u>               | <u>Project #</u> | <u>Municipality</u> | <u>Sponsor</u> | <u>Map #</u> |
|-----------|-----------------------------------|------------------|---------------------|----------------|--------------|
| 1049      | SR 1049 ov Br Ltl Crabtree Ck-DFB | 105818           | Unity               | PennDOT        | 16           |

**Est Let Date** Air Quality Invest Category **Location:** BMS: 64 1049 0010 2716

10/9/2025 Exempt Bridge Rehab/Replacement

**Description:** This project is the rehabilitation/replacement of the structure carrying SR 1049 (Twin Lakes Road) over a branch of Little Crabtree Creek in Unity Township, Westmoreland County.\*No new capacity will be added\*

| PROJECT FUNDING                            | FUND CODE | 2025             | 2026 | 2027 | 2028 | TOTAL            |
|--|-----------|------------------|------|------|------|------------------|
| Utilities                                  |           |                  |      |      |      |                  |
| State                                      | 185       | \$25,000         |      |      |      | \$25,000         |
| Right of Way                               |           |                  |      |      |      |                  |
| State                                      | 185       | \$25,000         |      |      |      | \$25,000         |
| Construction                               |           |                  |      |      |      |                  |
| State                                      | 185       | \$150,000        |      |      |      | \$150,000        |
|  |           | <b>\$200,000</b> |      |      |      | <b>\$200,000</b> |
| <b>2025 - 2028 Total Programmed Amount</b> |           |                  |      |      |      | <b>\$200,000</b> |



**2025-2028 TIP**

**Westmoreland County PennDOT District 12**

| <u>SR</u> | <u>Project Name</u>     | <u>Project #</u> | <u>Municipality</u> | <u>Sponsor</u> | <u>Map #</u> |
|-----------|-------------------------|------------------|---------------------|----------------|--------------|
| 982       | PA 982 over Sawmill Run | 105837           | Youngstown          | PennDOT        | 17           |

**Est Let Date**   **Air Quality**   **Invest Category**   **Location:** BMS: 64 0982 0210 1015  
 Exempt   Bridge Rehab/Replacement

**Description:** This project is the replacement/rehabilitation of the structure carrying PA 982 (Baggley Youngstown Road) over Sawmill Run in Youngstown Borough, Westmoreland County.\*No new capacity will be added\*

| PROJECT FUNDING                            | FUND CODE | 2025             | 2026 | 2027             | 2028 | TOTAL              |
|--|-----------|------------------|------|------------------|------|--------------------|
| Preliminary Engineering                    |           |                  |      |                  |      |                    |
| State                                      | 185       | \$500,000        |      |                  |      | \$500,000          |
| Final Design                               |           |                  |      |                  |      |                    |
| State                                      | 185       |                  |      | \$400,000        |      | \$400,000          |
| Utilities                                  |           |                  |      |                  |      |                    |
| State                                      | 185       |                  |      | \$250,000        |      | \$250,000          |
| Right of Way                               |           |                  |      |                  |      |                    |
| State                                      | 185       |                  |      | \$250,000        |      | \$250,000          |
|  |           | <b>\$500,000</b> |      | <b>\$900,000</b> |      | <b>\$1,400,000</b> |
| <b>2025 - 2028 Total Programmed Amount</b> |           |                  |      |                  |      | <b>\$1,400,000</b> |



**2025-2028 TIP**

**Westmoreland County PennDOT District 12**

| <u>SR</u> | <u>Project Name</u>           | <u>Project #</u> | <u>Municipality</u> | <u>Sponsor</u> | <u>Map #</u> |
|-----------|-------------------------------|------------------|---------------------|----------------|--------------|
| 7204      | West Co Local Br Preservation | 106406           | Derry               | PennDOT        | 18           |

**Est Let Date** 10/19/2028    **Air Quality** Exempt    **Invest Category** Bridge Preservation    **Location:** Various Local Structures over Loyalhanna Creek, Westmoreland County, BMS# 64 7204 0881 5025, 64 7204 0896 5027, 64 7210 0719 5026, 64 7204 0835 5032

**Description:** This project is for structure improvements to (4) locally owned structures over Loyalhanna Creek in Westmoreland County.  
 \*No new capacity will be added\*

The four structures to be worked on follows:  
 BMS# 64 7204 0835 5032 (Township Road-662 McFarland

| PROJECT FUNDING                            | FUND CODE | 2025               | 2026             | 2027 | 2028 | TOTAL              |
|--|-----------|--------------------|------------------|------|------|--------------------|
| Final Design                               |           |                    |                  |      |      |                    |
| Federal                                    | STU       | \$450,000          |                  |      |      | \$450,000          |
| Construction                               |           |                    |                  |      |      |                    |
| Federal                                    | STP       |                    | \$800,000        |      |      | \$800,000          |
|  | SXF       | \$1,600,000        |                  |      |      | \$1,600,000        |
|  |           | <b>\$2,050,000</b> | <b>\$800,000</b> |      |      | <b>\$2,850,000</b> |
| <b>2025 - 2028 Total Programmed Amount</b> |           |                    |                  |      |      | <b>\$2,850,000</b> |



**2025-2028 TIP**

**Westmoreland County PennDOT District 12**

| <u>SR</u> | <u>Project Name</u>              | <u>Project #</u> | <u>Municipality</u> | <u>Sponsor</u> | <u>Map #</u> |
|-----------|----------------------------------|------------------|---------------------|----------------|--------------|
| 981       | LVTIP: Norvelt to Pleasant Unity | 108010           | Mount Pleasant      | PennDOT        | 19           |

**Est Let Date** 10/30/2025    **Air Quality** Exempt    **Invest Category** Efficiency / Operations    **Location:** PA 981 from Norvelt to Pleasant Unity Mount Pleasant Township, Westmoreland County

**Description:** This project is for corridor improvements to PA 981 from the village of Norvelt to the village of Pleasant Unity in Mt Pleasant Township, Westmoreland County.

SR 981, Section V20 is approximately 3.5 miles and begins north of the SR 981 and SR 2021 (Kecksburg Road)/Mt. Pleasant Road intersection (Norvelt intersection) in Mount Pleasant Township. From just north of the Norvelt intersection, the project area extends generally along SR 2023 to the intersection with SR 130 in Unity Township. Section V20 primarily follows existing SR 2023 with some offline shifts to improve the roadway. No new capacity is planned.

| PROJECT FUNDING | FUND CODE | 2025 | 2026 | 2027                | 2028                | TOTAL               |
|-----------------|-----------|------|------|---------------------|---------------------|---------------------|
| Construction    |           |      |      |                     |                     |                     |
| Federal         | STP       |      |      | \$5,000,000         | \$5,000,000         | \$10,000,000        |
|                 | STU       |      |      | \$4,103,720         | \$8,703,720         | \$12,807,440        |
| State           | 581       |      |      | \$3,431,720         | \$3,431,720         | \$6,863,440         |
|                 |           |      |      | <b>\$12,535,440</b> | <b>\$17,135,440</b> | <b>\$29,670,880</b> |

**2025 - 2028 Total Programmed Amount    \$29,670,880**



**2025-2028 TIP**

**Westmoreland County PennDOT District 12**

| <u>SR</u> | <u>Project Name</u>              | <u>Project #</u> | <u>Municipality</u> | <u>Sponsor</u> | <u>Map #</u> |
|-----------|----------------------------------|------------------|---------------------|----------------|--------------|
| 981       | LVTIP: Pleasant Unity to Airport | 108140           | Unity               | PennDOT        | 20           |

**Est Let Date** 1/9/2025    **Air Quality** Exempt    **Invest Category** Efficiency / Operations    **Location:** PA 981 from Pleasant Unity to Airport Mt Pleasant and Unity Townships, Westmoreland County.

**Description:** The LVTIP (Laurel Valley Transportation Improvement Project) project will upgrade 12 miles of the PA 981 corridor from the intersection with PA 819 in Mount Pleasant Township to the Westmoreland County Airport in Unity Township.

The LVTIP will be constructed in three separate sections. Section Y10 is the northern most and will tie into the recently completed 981-V10 project near the airport. SR 981-Y10 is approximately 2.5 miles in length and begins just south of the intersection of Bingham Road and the SR 2023 (Hill Churches Road) intersection in Mt. Pleasant Township. SR 981- Y10 then primarily follows existing SR 2023 northward to near the intersection with Green Street. At this point, the alignment proceeds in a northwestward direction to the Westmoreland Airpark. It then extends through the Airpark along the southern portion of Bay Hill Drive then intersects with existing SR 981 just south of the Arnold Palmer Airport. No new capacity is planned.

Corridor improvements would include on-line upgrades as well as segments of new alignment where upgrades are not feasible due to physical/environmental constraints.

| PROJECT FUNDING                            | FUND CODE | 2025                | 2026                | 2027                | 2028 | TOTAL               |
|--|-----------|---------------------|---------------------|---------------------|------|---------------------|
| Construction                               |           |                     |                     |                     |      |                     |
| Federal                                    | sSTP      | \$10,200,000        | \$17,000,000        | \$14,000,000        |      | \$41,200,000        |
|  | STU       | \$3,000,000         | \$8,726,882         | \$4,600,000         |      | \$16,326,882        |
|  |           | <b>\$13,200,000</b> | <b>\$25,726,882</b> | <b>\$18,600,000</b> |      | <b>\$57,526,882</b> |
| <b>2025 - 2028 Total Programmed Amount</b> |           |                     |                     |                     |      | <b>\$57,526,882</b> |



**2025-2028 TIP**

**Westmoreland County PennDOT District 12**

| <u>SR</u> | <u>Project Name</u>                      | <u>Project #</u> | <u>Municipality</u> | <u>Sponsor</u> | <u>Map #</u> |
|-----------|--|------------------|---------------------|----------------|--------------|
| 30        | US 30 Corridor Impvmts - Western Section | 110900           | North Huntingdon    | PennDOT        | 21           |

**Est Let Date** 8/21/2025    **Air Quality** Exempt    **Invest Category** Roadway Reconstruction    **Location:** US 30 Segment/Offsets (Allegheny County-North Versailles Township)- 0330/1200 to 0340/2437- 0331/1050 to 0341/2448 Segment/Offsets (Westmoreland County-North Huntingdon Township)- 0010/0000 to 0060/2931- 0011/0000 to 0061/2935

**Description:** This project is for safety improvements to the western section of the US 30 Corridor Safety Improvement Study Area from the intersection of US 30/PA 48 to Malts Lane in Allegheny and Westmoreland Counties.

| PROJECT FUNDING | FUND CODE | 2025               | 2026               | 2027                | 2028                | TOTAL               |
|-----------------|-----------|--------------------|--------------------|---------------------|---------------------|---------------------|
| Construction    |           |                    |                    |                     |                     |                     |
| Federal         | NHPP      |                    | \$6,600,000        | \$8,000,000         | \$8,000,000         | \$22,600,000        |
|                 | STP       | \$600,000          |                    |                     |                     | \$600,000           |
|                 | STU       | \$400,000          |                    |                     |                     | \$400,000           |
| State           | 581       | \$550,000          | \$1,650,000        | \$2,000,000         | \$2,000,000         | \$6,200,000         |
|                 |           | <b>\$1,550,000</b> | <b>\$8,250,000</b> | <b>\$10,000,000</b> | <b>\$10,000,000</b> | <b>\$29,800,000</b> |

**2025 - 2028 Total Programmed Amount    \$29,800,000**

| <u>SR</u> | <u>Project Name</u>              | <u>Project #</u> | <u>Municipality</u> | <u>Sponsor</u> | <u>Map #</u> |
|-----------|----------------------------------|------------------|---------------------|----------------|--------------|
| 4091      | SR 4091 ov Stream to Kiski River | 112902           | Allegheny           | PennDOT        | 22           |

**Est Let Date**    **Air Quality** Exempt    **Invest Category** Bridge Rehab/Replacement    **Location:** BMS ID# 64-4091-0010-0157

**Description:** This project is for the replacement of the structure carrying SR 4091 (Leechburg Rd) over stream to Kiskiminetas River in Allegheny Township, Westmoreland County. \*No new capacity will be added\*

| PROJECT FUNDING         | FUND CODE | 2025 | 2026 | 2027 | 2028             | TOTAL            |
|-------------------------|-----------|------|------|------|------------------|------------------|
| Preliminary Engineering |           |      |      |      |                  |                  |
| State                   | 581       |      |      |      | \$500,000        | \$500,000        |
|                         |           |      |      |      | <b>\$500,000</b> | <b>\$500,000</b> |

**2025 - 2028 Total Programmed Amount    \$500,000**



**2025-2028 TIP**

**Westmoreland County PennDOT District 12**

| <u>SR</u> | <u>Project Name</u>     | <u>Project #</u> | <u>Municipality</u> | <u>Sponsor</u> | <u>Map #</u> |
|-----------|-------------------------|------------------|---------------------|----------------|--------------|
| 4087      | New Kensington Corridor | 113267           | New Kensington      | PennDOT        | 23           |

**Est Let Date** Air Quality Invest Category **Location:** DOT Crossings: 510 936 G, 510 934 T, 510 933 L, 510 932 E, 510 931 X, 510 930 R, 510 908 D, 510 906 P, 510 898 A, 510 897 T, 510 895E, 510 890V, 510 889B, 504 620 H504 625 S, 504 626 Y, 504 627 F, 504 629 U, 507 636 P,507 637 W

4/5/2023 Exempt Safety

**Description:** This project is the RRX Improvements including but not limited to Crossbuck signs, RR gates, and other warning devices on the New Kensington Corridor, at SR 4087 (Second Street), PA 56 (7th Street), and other municipal crossings in the city of New Kensington, Westmoreland County, and at various intersections along the line in District 11 (Only SR crossing is at SR 2082 Hulton Road) in Allegheny County.

| PROJECT FUNDING                            | FUND CODE | 2025               | 2026               | 2027               | 2028               | TOTAL              |
|--|-----------|--------------------|--------------------|--------------------|--------------------|--------------------|
| Construction                               |           |                    |                    |                    |                    |                    |
| Federal                                    | RRX       | \$1,000,000        | \$1,500,000        | \$1,500,000        | \$1,500,000        | \$5,500,000        |
|  |           | <b>\$1,000,000</b> | <b>\$1,500,000</b> | <b>\$1,500,000</b> | <b>\$1,500,000</b> | <b>\$5,500,000</b> |
| <b>2025 - 2028 Total Programmed Amount</b> |           |                    |                    |                    |                    | <b>\$5,500,000</b> |

| <u>SR</u> | <u>Project Name</u>                       | <u>Project #</u> | <u>Municipality</u> | <u>Sponsor</u> | <u>Map #</u> |
|-----------|---|------------------|---------------------|----------------|--------------|
| 1026      | Donohoe Road/Georges Station Intersection | 113823           | Hempfield           | PennDOT        | 24           |

**Est Let Date** Air Quality Invest Category **Location:** Georges Station Road (SR 1053) and Donohoe Road (SR 1026)Segment/Offset (SR 1026) - 0030/0000Segment/Offset (SR 1053) - 0020/1170

3/20/2025 Exempt Safety

**Description:** This project is for improvements to the intersection of State Route 1053 (Georges Station Road) and State Route 1026 (Donohoe Road) in Hempfield Township, Westmoreland County.

| PROJECT FUNDING                            | FUND CODE | 2025               | 2026 | 2027               | 2028               | TOTAL              |
|--|-----------|--------------------|------|--------------------|--------------------|--------------------|
| Utilities                                  |           |                    |      |                    |                    |                    |
| State                                      | 581       | \$1,250,000        |      |                    |                    | \$1,250,000        |
| Right of Way                               |           |                    |      |                    |                    |                    |
| State                                      | 581       | \$1,750,000        |      |                    |                    | \$1,750,000        |
| Construction                               |           |                    |      |                    |                    |                    |
| Federal                                    | STP       |                    |      | \$2,000,000        | \$3,850,000        | \$5,850,000        |
|  |           | <b>\$3,000,000</b> |      | <b>\$2,000,000</b> | <b>\$3,850,000</b> | <b>\$8,850,000</b> |
| <b>2025 - 2028 Total Programmed Amount</b> |           |                    |      |                    |                    | <b>\$8,850,000</b> |





**2025-2028 TIP**

**Westmoreland County PennDOT District 12**

| <u>SR</u> | <u>Project Name</u>    | <u>Project #</u> | <u>Municipality</u> | <u>Sponsor</u> | <u>Map #</u> |
|-----------|------------------------|------------------|---------------------|----------------|--------------|
| 119       | 119 SW Greensburg CMAQ | 114560           | South Greensburg    | PennDOT        | 25           |

**Est Let Date** Air Quality Invest Category **Location:** Various Locations in Westmoreland County  
 8/21/2025 Significant Efficiency / Operations

**Description:** This project includes the replacement of 1 traffic signal and minor improvements to 7 traffic signals located on Congestion Management Corridor 88 in order to implement an efficient traffic signal system and coordination timings in various locations in va

| PROJECT FUNDING | FUND CODE | 2025               | 2026 | 2027 | 2028 | TOTAL              |
|-----------------|-----------|--------------------|------|------|------|--------------------|
| Construction    |           |                    |      |      |      |                    |
| Federal         | CAQ       | \$2,250,000        |      |      |      | \$2,250,000        |
|                 |           | <b>\$2,250,000</b> |      |      |      | <b>\$2,250,000</b> |

**2025 - 2028 Total Programmed Amount \$2,250,000**

| <u>SR</u> | <u>Project Name</u>         | <u>Project #</u> | <u>Municipality</u> | <u>Sponsor</u> | <u>Map #</u> |
|-----------|-----------------------------|------------------|---------------------|----------------|--------------|
| 66        | PA 66 Pavement Preservation | 116179           | Delmont             | PennDOT        | 26           |

**Est Let Date** Air Quality Invest Category **Location:** Westmoreland CountyDelmont Borough, Salem Township and Washington TownshipSR 0066SEG 0170/0000 to SEG 0380/1185SEG 0171/0000 to SEG 0191/1515  
 10/24/2024 Exempt Roadway Preservation

**Description:** This project is for the resurfacing of SR 0066 from SEG 0210/1375 to SEG 0380/1185 (Story Road to North of PA 366 to Muffley Drive) for a total length of 9.50 miles in Delmont Borough, Salem Township, and Washington Township in Westmoreland County.

| PROJECT FUNDING | FUND CODE | 2025                | 2026 | 2027 | 2028 | TOTAL               |
|-----------------|-----------|---------------------|------|------|------|---------------------|
| Final Design    |           |                     |      |      |      |                     |
| Federal         | SHVRU     | \$300,000           |      |      |      | \$300,000           |
| Construction    |           |                     |      |      |      |                     |
| Federal         | NHPP      | \$10,000,000        |      |      |      | \$10,000,000        |
|                 | sHSIP     | \$250,000           |      |      |      | \$250,000           |
|                 | SHVRU     | \$300,000           |      |      |      | \$300,000           |
|                 |           | <b>\$10,850,000</b> |      |      |      | <b>\$10,850,000</b> |

**2025 - 2028 Total Programmed Amount \$10,850,000**



**2025-2028 TIP**

**Westmoreland County PennDOT District 12**

| <u>SR</u> | <u>Project Name</u>           | <u>Project #</u> | <u>Municipality</u> | <u>Sponsor</u> | <u>Map #</u> |
|-----------|-------------------------------|------------------|---------------------|----------------|--------------|
| 70        | I-70 @ PA 201 Interchange PEL | 116461           | Rostraver           | PennDOT        | 27           |

**Est Let Date**   **Air Quality**   **Invest Category**   **Location:** Seg/Off: 0424/0000 to 0434/2640   0425/0000 to 0435/2595  
 Exempt   Study

**Description:** This project is a study of the I-70 corridor in the PA 201 Interchange area and surrounding mainline 70 to determine needs in the area; this project is located in Rostraver Township, Westmoreland County.

| PROJECT FUNDING | FUND CODE | 2025               | 2026             | 2027 | 2028 | TOTAL              |
|-----------------|-----------|--------------------|------------------|------|------|--------------------|
| Study           |           |                    |                  |      |      |                    |
| Federal         | NHPP      | \$1,000,000        | \$500,000        |      |      | \$1,500,000        |
|                 |           | <b>\$1,000,000</b> | <b>\$500,000</b> |      |      | <b>\$1,500,000</b> |

**2025 - 2028 Total Programmed Amount   \$1,500,000**

| <u>SR</u> | <u>Project Name</u>                              | <u>Project #</u> | <u>Municipality</u> | <u>Sponsor</u> | <u>Map #</u> |
|-----------|--|------------------|---------------------|----------------|--------------|
| 1049      | SR 1049 over Br Little Crabtree Creek (Seg 40)-D | 116465           | Unity               | PennDOT        | 28           |

**Est Let Date**   **Air Quality**   **Invest Category**   **Location:** BMS ID: 64 1049 0040 0000BR Key: 36439  
 6/1/2027   Exempt   Bridge Rehab/Replacement

**Description:** This project is for the replacement of the structure carrying SR 1049 (Twin Lakes Road) over a Branch of Little Crabtree Creek in Unity Township, Westmoreland County. \*No new capacity will be added.\*

| PROJECT FUNDING | FUND CODE | 2025 | 2026             | 2027 | 2028 | TOTAL            |
|-----------------|-----------|------|------------------|------|------|------------------|
| Utilities       |           |      |                  |      |      |                  |
| State           | 185       |      | \$25,000         |      |      | \$25,000         |
| Right of Way    |           |      |                  |      |      |                  |
| State           | 185       |      | \$25,000         |      |      | \$25,000         |
| Construction    |           |      |                  |      |      |                  |
| State           | 185       |      | \$150,000        |      |      | \$150,000        |
|                 |           |      | <b>\$200,000</b> |      |      | <b>\$200,000</b> |

**2025 - 2028 Total Programmed Amount   \$200,000**



**2025-2028 TIP**

**Westmoreland County PennDOT District 12**

| <u>SR</u> | <u>Project Name</u>                            | <u>Project #</u> | <u>Municipality</u> | <u>Sponsor</u> | <u>Map #</u> |
|-----------|--|------------------|---------------------|----------------|--------------|
| 1049      | SR 1049 over Br Little Crabtree Creek (Seg 20) | 116467           | Unity               | PennDOT        | 29           |

**Est Let Date** Air Quality Invest Category **Location:** BMS ID: 64 1049 0020 0000BR Key: 36438

10/9/2025 Exempt Bridge Rehab/Replacement

**Description:** This project is the rehabilitation/replacement of the structure carrying SR 1049 (Twin Lakes Road) over a Branch of Little Crabtree Creek in Unity Township, Westmoreland County.\*No new capacity will be added\*

| PROJECT FUNDING                            | FUND CODE | 2025             | 2026 | 2027 | 2028 | TOTAL            |
|--|-----------|------------------|------|------|------|------------------|
| Utilities                                  |           |                  |      |      |      |                  |
| State                                      | 185       | \$25,000         |      |      |      | \$25,000         |
| Right of Way                               |           |                  |      |      |      |                  |
| State                                      | 185       | \$25,000         |      |      |      | \$25,000         |
| Construction                               |           |                  |      |      |      |                  |
| State                                      | 185       | \$150,000        |      |      |      | \$150,000        |
|  |           | <b>\$200,000</b> |      |      |      | <b>\$200,000</b> |
| <b>2025 - 2028 Total Programmed Amount</b> |           |                  |      |      |      | <b>\$200,000</b> |



**2025-2028 TIP**

**Westmoreland County PennDOT District 12**

| <u>SR</u> | <u>Project Name</u>          | <u>Project #</u> | <u>Municipality</u> | <u>Sponsor</u> | <u>Map #</u> |
|-----------|------------------------------|------------------|---------------------|----------------|--------------|
| 3063      | SR 3063 over Andrews Run-DFB | 116470           | Hempfield           | PennDOT        | 30           |

**Est Let Date** Air Quality Invest Category **Location:** BMS ID: 64 3063 0010 0221BR Key: 36627

10/9/2025 Exempt Bridge Rehab/Replacement

**Description:** This project is for the rehabilitation/replacement of the structure carrying SR 3063 (Hahntown Wendel Road) over Andrews Run in Hempfield Township, Westmoreland County.\*No new capacity will be added\*

| PROJECT FUNDING                            | FUND CODE | 2025             | 2026      | 2027 | 2028             | TOTAL            |
|--|-----------|------------------|-----------|------|------------------|------------------|
| Utilities                                  |           |                  |           |      |                  |                  |
| State                                      | 185       |                  | \$25,000  |      |                  | \$25,000         |
| Right of Way                               |           |                  |           |      |                  |                  |
| State                                      | 185       |                  | \$25,000  |      |                  | \$25,000         |
| Construction                               |           |                  |           |      |                  |                  |
| State                                      | 185       |                  | \$150,000 |      |                  | \$150,000        |
|  |           | <b>\$200,000</b> |           |      | <b>\$200,000</b> |                  |
| <b>2025 - 2028 Total Programmed Amount</b> |           |                  |           |      |                  | <b>\$200,000</b> |



**2025-2028 TIP**

**Westmoreland County PennDOT District 12**

| <u>SR</u> | <u>Project Name</u>              | <u>Project #</u> | <u>Municipality</u> | <u>Sponsor</u> | <u>Map #</u> |
|-----------|----------------------------------|------------------|---------------------|----------------|--------------|
| 4041      | SR 4041 over Br of Brush Run-DFB | 116471           | Penn                | PennDOT        | 31           |

**Est Let Date** Air Quality Invest Category **Location:** BMS ID: 64 4041 0030 0690BR Key: 36741

10/9/2025 Exempt Bridge Rehab/Replacement

**Description:** This project is for the rehabilitation/replacement of the structure carrying SR 4041 (Denmark Manor Road) over Branch of Brush Run in Penn Township, Westmoreland County. \*No new capacity will be added\*

| PROJECT FUNDING | FUND CODE | 2025             | 2026 | 2027 | 2028 | TOTAL            |
|-----------------|-----------|------------------|------|------|------|------------------|
| Utilities       |           |                  |      |      |      |                  |
| State           | 185       | \$25,000         |      |      |      | \$25,000         |
| Right of Way    |           |                  |      |      |      |                  |
| State           | 185       | \$25,000         |      |      |      | \$25,000         |
| Construction    |           |                  |      |      |      |                  |
| State           | 185       | \$150,000        |      |      |      | \$150,000        |
|                 |           | <b>\$200,000</b> |      |      |      | <b>\$200,000</b> |

**2025 - 2028 Total Programmed Amount \$200,000**

| <u>SR</u> | <u>Project Name</u>                | <u>Project #</u> | <u>Municipality</u> | <u>Sponsor</u> | <u>Map #</u> |
|-----------|------------------------------------|------------------|---------------------|----------------|--------------|
| 356       | Freeport Bridge Truss Preservation | 116790           | Allegheny           | PennDOT        | 32           |

**Est Let Date** Air Quality Invest Category **Location:** BMS# 64 0356 0222 0000

2/5/2026 Exempt Bridge Preservation

**Description:** This project is for truss preservation activities to the Freeport Bridge carrying PA 356 over the Kiskiminetas River in Allegheny Township, Westmoreland County.

| PROJECT FUNDING | FUND CODE | 2025 | 2026 | 2027 | 2028               | TOTAL              |
|-----------------|-----------|------|------|------|--------------------|--------------------|
| Construction    |           |      |      |      |                    |                    |
| State           | 185       |      |      |      | \$1,000,000        | \$1,000,000        |
|                 |           |      |      |      | <b>\$1,000,000</b> | <b>\$1,000,000</b> |

**2025 - 2028 Total Programmed Amount \$1,000,000**



**2025-2028 TIP**

**Westmoreland County PennDOT District 12**

| <u>SR</u> | <u>Project Name</u>                   | <u>Project #</u> | <u>Municipality</u> | <u>Sponsor</u> | <u>Map #</u> |
|-----------|---------------------------------------|------------------|---------------------|----------------|--------------|
| 130       | PA 130 Corridor Review & Improvements | 119638           | Trafford            | PennDOT        | 33           |

**Est Let Date**   **Air Quality**   **Invest Category**   **Location:** PA130 Corridor Review & Improvements Westmoreland County  
 Exempt   Roadway Reconstruction

**Description:** This project is for roadway improvements along the PA 130 corridor in Westmoreland County.

| PROJECT FUNDING         | FUND CODE | 2025               | 2026 | 2027 | 2028 | TOTAL              |
|-------------------------|-----------|--------------------|------|------|------|--------------------|
| Preliminary Engineering |           |                    |      |      |      |                    |
| State                   | 581       | \$1,000,000        |      |      |      | \$1,000,000        |
|                         |           | <b>\$1,000,000</b> |      |      |      | <b>\$1,000,000</b> |

**2025 - 2028 Total Programmed Amount    \$1,000,000**

| <u>SR</u> | <u>Project Name</u>          | <u>Project #</u> | <u>Municipality</u> | <u>Sponsor</u> | <u>Map #</u> |
|-----------|------------------------------|------------------|---------------------|----------------|--------------|
| 3014      | SR 3014 over Sewickley Creek | 120056           | Hempfield           | PennDOT        | 34           |

**Est Let Date**   **Air Quality**   **Invest Category**   **Location:** 64 3014 0020 0000  
 Exempt   Bridge Rehab/Replacement

**Description:** This project is for the replacement/rehabilitation of the structure carrying SR 3014 (Hunker Road) over Sewickley Creek in Hempfield Township, Westmoreland County. \*No new capacity will be added\*

| PROJECT FUNDING         | FUND CODE | 2025 | 2026             | 2027 | 2028             | TOTAL              |
|-------------------------|-----------|------|------------------|------|------------------|--------------------|
| Preliminary Engineering |           |      |                  |      |                  |                    |
| Federal                 | BOF       |      | \$320,000        |      |                  | \$320,000          |
| State                   | 185       |      | \$80,000         |      |                  | \$80,000           |
| Final Design            |           |      |                  |      |                  |                    |
| Federal                 | BOF       |      |                  |      | \$400,000        | \$400,000          |
| Utilities               |           |      |                  |      |                  |                    |
| Federal                 | BOF       |      |                  |      | \$150,000        | \$150,000          |
| Right of Way            |           |      |                  |      |                  |                    |
| Federal                 | BOF       |      |                  |      | \$150,000        | \$150,000          |
|                         |           |      | <b>\$400,000</b> |      | <b>\$700,000</b> | <b>\$1,100,000</b> |

**2025 - 2028 Total Programmed Amount    \$1,100,000**



**2025-2028 TIP**

**Westmoreland County PennDOT District 12**

| <u>SR</u> | <u>Project Name</u>     | <u>Project #</u> | <u>Municipality</u> | <u>Sponsor</u> | <u>Map #</u> |
|-----------|-------------------------|------------------|---------------------|----------------|--------------|
| 4006      | SR 4006 Flashing Beacon | 120639           | Jeannette           | PennDOT        | 35           |

**Est Let Date** Air Quality Invest Category **Location:** SR 4006 City of Jeanette, Westmoreland County Safety Improvement  
 7/16/2026 Exempt Safety

**Description:** SR 4006 City of Jeanette, Westmoreland County Safety Improvement

| PROJECT FUNDING         | FUND CODE | 2025             | 2026      | 2027 | 2028             | TOTAL     |
|-------------------------|-----------|------------------|-----------|------|------------------|-----------|
| Preliminary Engineering |           |                  |           |      |                  |           |
| Federal                 | sHSIP     |                  | \$300,000 |      |                  | \$300,000 |
| Construction            |           |                  |           |      |                  |           |
| Federal                 | sHSIP     |                  | \$150,000 |      |                  | \$150,000 |
|                         |           | <b>\$450,000</b> |           |      | <b>\$450,000</b> |           |

**2025 - 2028 Total Programmed Amount \$450,000**

| <u>SR</u> | <u>Project Name</u>                | <u>Project #</u> | <u>Municipality</u> | <u>Sponsor</u> | <u>Map #</u> |
|-----------|------------------------------------|------------------|---------------------|----------------|--------------|
| 30        | US 30 at Cedar Street Improvements | 120641           | Hempfield           | PennDOT        | 36           |

**Est Let Date** Air Quality Invest Category **Location:** This project will add improvements to the westbound exit from SR 30 to Cedar Street. These improvements will include signs, pavement markings and HFS. This exit ramp has a very sharp curve where it intersects with Cedar Street, a short deceleration lane  
 4/3/2025 Exempt Safety

**Description:** This project will add improvements to the westbound exit from SR 30 to Cedar Street. These improvements will include signs, pavement markings and HFS. This exit ramp has a very sharp curve where it intersects with Cedar Street, a short deceleration lane and limited sight distance.

| PROJECT FUNDING | FUND CODE | 2025             | 2026 | 2027 | 2028             | TOTAL     |
|-----------------|-----------|------------------|------|------|------------------|-----------|
| Construction    |           |                  |      |      |                  |           |
| Federal         | HSIP      | \$200,000        |      |      |                  | \$200,000 |
|                 |           | <b>\$200,000</b> |      |      | <b>\$200,000</b> |           |

**2025 - 2028 Total Programmed Amount \$200,000**



**2025-2028 TIP**

**Westmoreland County PennDOT District 12**

| <u>SR</u> | <u>Project Name</u>          | <u>Project #</u> | <u>Municipality</u> | <u>Sponsor</u> | <u>Map #</u> |
|-----------|------------------------------|------------------|---------------------|----------------|--------------|
| 7205      | T-880 Bridge #2, Donegal Twp | 121009           | Donegal             | PennDOT        | 37           |

**Est Let Date**   **Air Quality**   **Invest Category**   **Location:** 5A04 District: 12 - District 125A05 County:64 - Westmoreland5A06 City/Town/Place:64/205 - DONEGAL5A07  
 Exempt   Bridge Rehab/Replacement   Feature Intersected:FOUR MILE RUN5A08 Facility Carried:T-880 DONEGAL LAKE5A09 Location:1/4 MI SW OF SR 130

**Description:** 5A04 District: 12 - District 125A05 County:64 - Westmoreland5A06 City/Town/Place:64/205 - DONEGAL5A07 Feature Intersected:FOUR MILE RUN5A08 Facility Carried:T-880 DONEGAL LAKE5A09 Location:1/4 MI SW OF SR 130

| PROJECT FUNDING                            | FUND CODE | 2025             | 2026             | 2027             | 2028 | TOTAL              |
|--|-----------|------------------|------------------|------------------|------|--------------------|
| Preliminary Engineering                    |           |                  |                  |                  |      |                    |
| Federal                                    | STU       | \$500,000        |                  |                  |      | \$500,000          |
| Final Design                               |           |                  |                  |                  |      |                    |
| Federal                                    | BOF       |                  | \$500,000        |                  |      | \$500,000          |
| Utilities                                  |           |                  |                  |                  |      |                    |
| Federal                                    | STP       |                  |                  | \$150,000        |      | \$150,000          |
| Right of Way                               |           |                  |                  |                  |      |                    |
| Federal                                    | STP       |                  |                  | \$150,000        |      | \$150,000          |
|  |           | <b>\$500,000</b> | <b>\$500,000</b> | <b>\$300,000</b> |      | <b>\$1,300,000</b> |
| <b>2025 - 2028 Total Programmed Amount</b> |           |                  |                  |                  |      | <b>\$1,300,000</b> |





**2025-2028 TIP**

**Westmoreland County PennDOT District 12**

| <u>SR</u> | <u>Project Name</u> | <u>Project #</u> | <u>Municipality</u> | <u>Sponsor</u> | <u>Map #</u> |
|-----------|---------------------|------------------|---------------------|----------------|--------------|
| 7215      | Bells Mill Bridge   | 121011           | Sewickley           | PennDOT        | 38           |

**Est Let Date**   **Air Quality**   **Invest Category**   **Location:** 5A04 District: 12 - District 125A05 County:64 - Westmoreland5A06 City/Town/Place:64/215 - SEWICKLEY5A07 Feature Intersected:SEWICKLEY CREEK5A08 Facility Carried:BELLS MILL ROAD5A09 Location:1/2 MI EAST OF SR 136

Exempt   Bridge Rehab/Replacement

**Description:** 5A04 District: 12 - District 125A05 County:64 - Westmoreland5A06 City/Town/Place:64/215 - SEWICKLEY5A07 Feature Intersected:SEWICKLEY CREEK5A08 Facility Carried:BELLS MILL ROAD5A09 Location:1/2 MI EAST OF SR 136

| PROJECT FUNDING | FUND CODE | 2025 | 2026 | 2027 | 2028 | TOTAL |
|-----------------|-----------|------|------|------|------|-------|
|-----------------|-----------|------|------|------|------|-------|

Preliminary Engineering

|         |     |  |  |  |           |           |
|---------|-----|--|--|--|-----------|-----------|
| Federal | BOF |  |  |  | \$500,000 | \$500,000 |
|---------|-----|--|--|--|-----------|-----------|

|  |  |  |  |  |           |           |
|--|--|--|--|--|-----------|-----------|
|  |  |  |  |  | \$500,000 | \$500,000 |
|--|--|--|--|--|-----------|-----------|

**2025 - 2028 Total Programmed Amount    \$500,000**