

What is the Congestion Management Process?

- The Congestion Management Process (CMP) is the process of monitoring congested corridors to develop mitigation strategies for the region.

- Process:

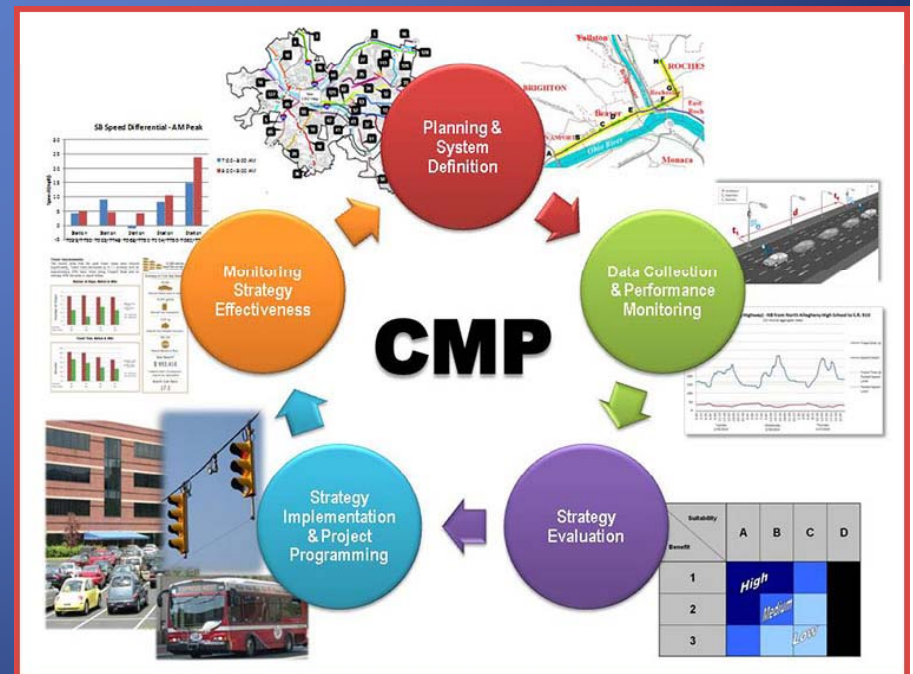
- Corridor Selection

- Data collection and monitoring of selected corridors

- Strategy suggestion

- Strategy implementation

- Strategy Monitoring



Why this exercise?

- Every three years, SPC reevaluates the CMP network
 - The data collected during the previous CMP cycle will help determine which corridors continue in the CMP
 - This exercise will assist with determining which corridors to add and remove
 - SPC will also meet separately with other stakeholders in more detail to help make adjustments
 - Survey will be emailed out for additional suggestions
 - The resulting suggested list of adjustments will be considered for the 2018-2021 CMP network.

Why this exercise?

- What corridors should be considered?

- CMP corridors are usually interstates or principal arterials. Occasionally, minor arterials are included
- Corridors that currently have congestion
- Corridors expected to have congestion in the next three years
- Corridors with high freight, transit, other non-SOV activity
- Current CMP corridors that do not currently have congestion
- Corridors near developments that will attract vehicular activity

CMP Exercise

- Group 1 (District 10)

- Armstrong County
- Butler County
- Indiana County

- Group 2 (District 11)

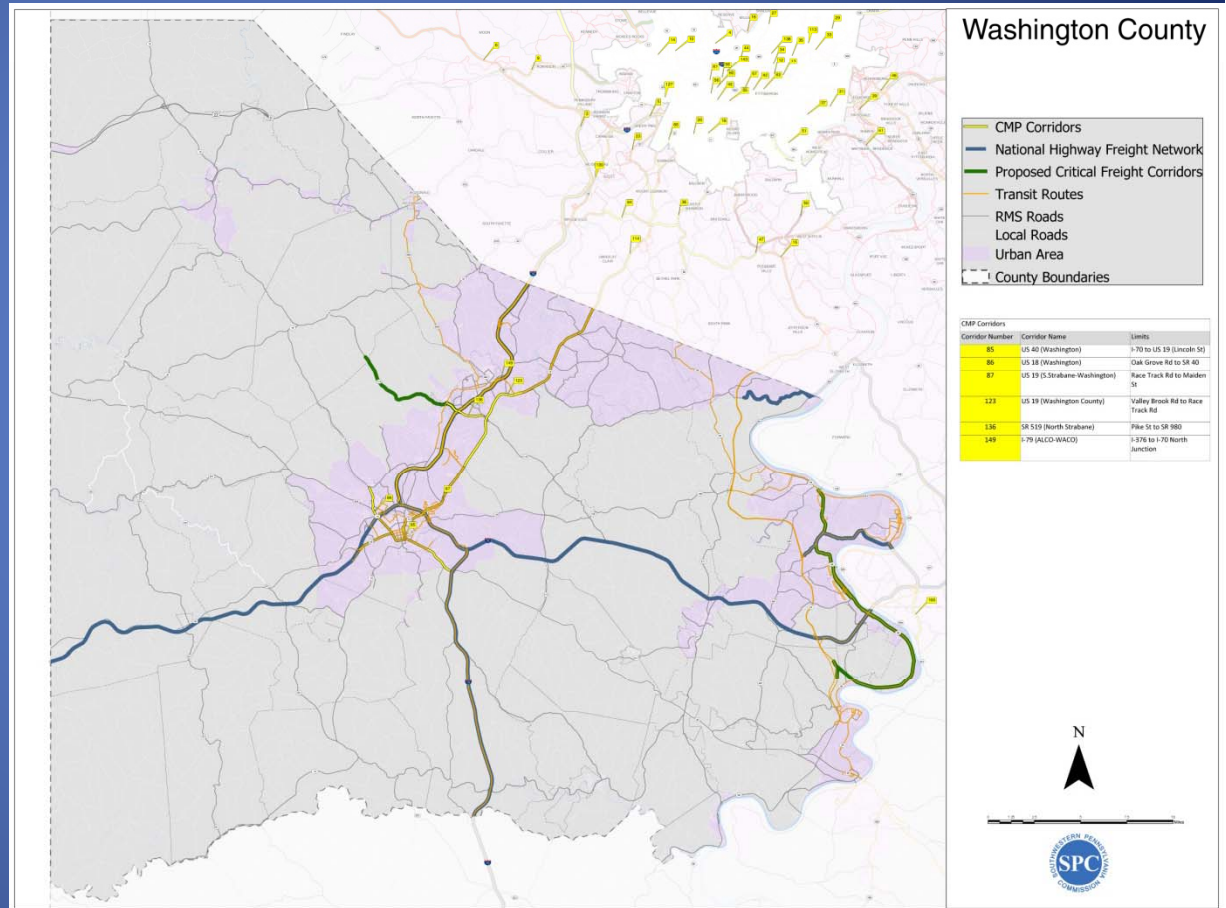
- Allegheny County
- Beaver County
- Lawrence County
- Pittsburgh

- Group 3 (District 12)

- Fayette County
- Greene County
- Washington County
- Westmoreland County

CMP Exercise

- Maps detail CMP corridors, freight corridors, and transit routes
- Highlight corridors to add, remove, extend, or shorten.
- List corridor on worksheet



Thank you!

Cody Nolen

Transportation Planner

412-391-5590 x303

cnolen@spcregion.org