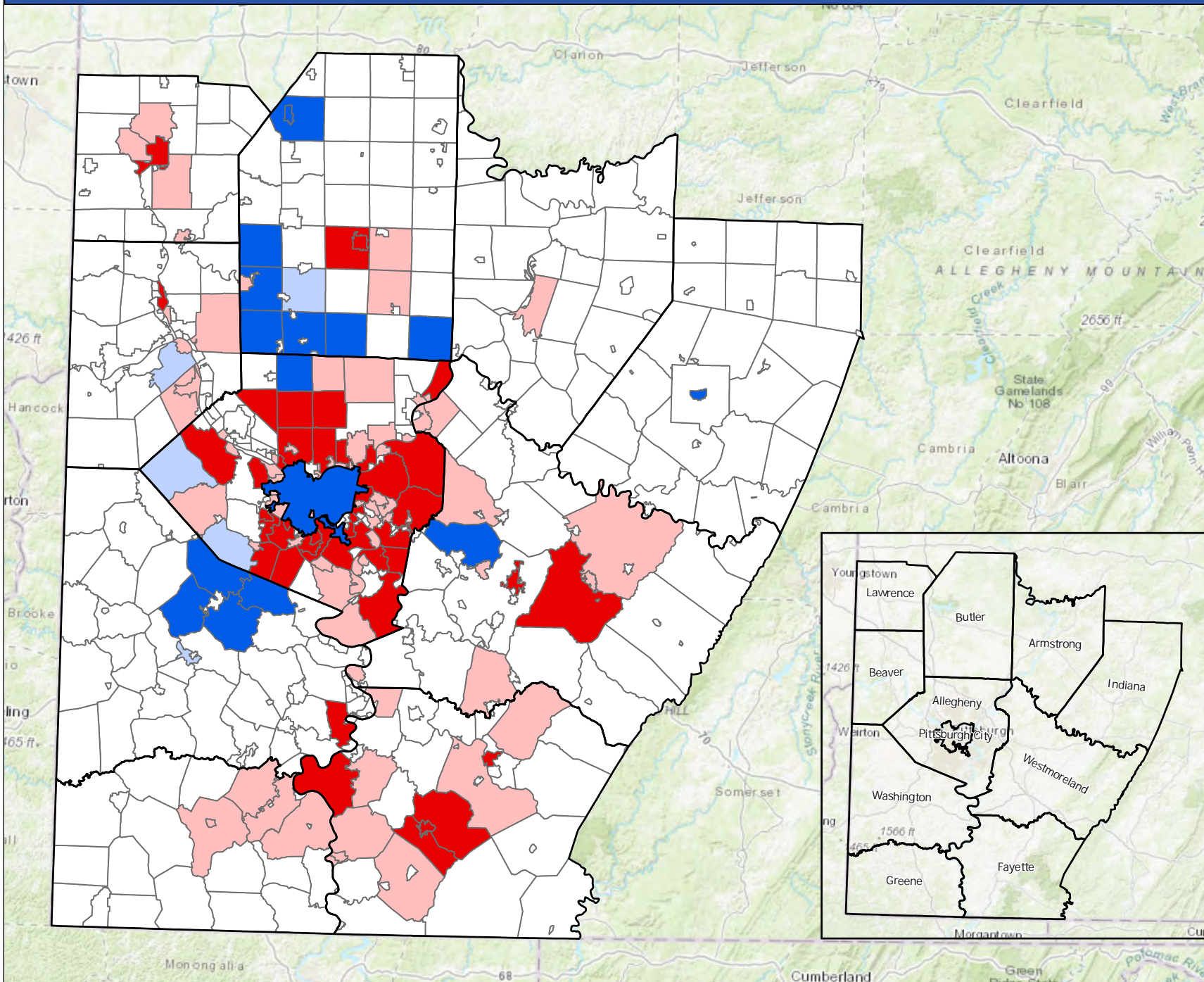


Population Change in the SPC Region, 2020-2023

Annual Estimates of Resident Municipal Population April 1 2020 to July 1 2023



Legend

Population Change by Municipality

- Less than -250
- 250 to -100
- 100 to 100
- 100 to 250
- Greater than 250
- Counties

The municipality with greatest negative change in the SPC Region (-1,349) is Penn Hills Township, located in Allegheny County.

The municipality with greatest positive change in the SPC Region (+1,714) is Slippery Rock Township, located in Butler County.

Estimates released by the Census Bureau on May 14, 2024



**Summary of Municipal Population Ten Largest and Smallest Numeric Change
in Each SPC County 2020-2023**

Numeric change rank within county	Municipality	Mid-Year Population		Numeric Change 2020-2023	Percent Change 2020-2023
		2020	2023		
130	Allegheny County				
	10 LARGEST NUMERIC CHANGE				
1	Pine Township	14,744	15,388	644	4.37%
2	City of Pittsburgh	302,779	303,255	476	0.16%
3	Findlay Township	6,409	6,546	137	2.14%
4	South Fayette Township	18,352	18,442	90	0.49%
5	Ohio Township	7,168	7,255	87	1.21%
6	Frazer Township	1,164	1,229	65	5.58%
7	Indiana Township	7,245	7,274	29	0.40%
8	Robinson Township	15,509	15,508	-1	-0.01%
9	Haysville Borough	82	79	-3	-3.66%
10	Trafford Borough	92	89	-3	-3.26%
	10 LOWEST NUMERIC CHANGE				
121	West Mifflin Borough	19,565	18,916	-649	-3.32%
122	Monroeville Municipality	28,649	27,974	-675	-2.36%
123	Plum Borough	27,142	26,391	-751	-2.77%
124	Baldwin Borough	21,474	20,708	-766	-3.57%
125	Shaler Township	28,083	27,116	-967	-3.44%
126	McCandless Township	29,664	28,673	-991	-3.34%
127	Mount Lebanon Township	34,020	32,938	-1,082	-3.18%
128	Ross Township	33,528	32,433	-1,095	-3.27%
129	Bethel Park Municipality	33,515	32,398	-1,117	-3.33%
130	Penn Hills Township	40,992	39,643	-1,349	-3.29%

45	Armstrong County				
	10 LARGEST NUMERIC CHANGE				
1	Hovey Township	74	71	-3	-4.05%
2	Atwood Borough	110	107	-3	-2.73%
3	Perry Township	366	362	-4	-1.09%
4	Manorville Borough	377	370	-7	-1.86%
5	Applewood Borough	338	330	-8	-2.37%
6	Cadogan Township	345	336	-9	-2.61%
7	Pine Township	14,744	15,388	-9	-0.06%
8	Ford Cliff Borough	360	351	-9	-2.50%
9	Elderton borough	333	323	-10	-3.00%
10	South Bethlehem Borough	486	475	-11	-2.26%
	10 LOWEST NUMERIC CHANGE				
36	Plumcreek Township	2,105	2,059	-46	-2.19%
37	Parks Township	2,465	2,412	-53	-2.15%
38	Leechburg Borough	2,146	2,091	-55	-2.56%
39	North Buffalo Township	2,691	2,633	-58	-2.16%
40	Cowanshannock Township	2,733	2,672	-61	-2.23%
41	Gilpin Township	2,408	2,346	-62	-2.57%
42	East Franklin Township	3,809	3,744	-65	-1.71%
43	Ford City Borough	2,854	2,781	-73	-2.56%
44	Kiskiminetas Township	4,603	4,516	-87	-1.89%
45	Manor Township	4,179	4,077	-102	-2.44%

**Summary of Municipal Population Ten Largest and Smallest Numeric Change
in Each SPC County 2020-2023**

Numeric change rank within county	Municipality	Mid-Year Population		Numeric Change 2020-2023	Percent Change 2020-2023
		2020	2023		
54	Beaver County				
	10 LARGEST NUMERIC CHANGE				
1	Center Township	11,645	11,726	81	0.70%
2	Greene Township	2,184	2,223	39	1.79%
3	Potter Township	521	522	1	0.19%
4	Glasgow Borough	70	68	-2	-2.86%
5	Homewood Borough	91	89	-2	-2.20%
6	Darlington Borough	247	245	-2	-0.81%
7	Hookstown Borough	132	129	-3	-2.27%
8	Frankfort Springs Borough	118	115	-3	-2.54%
9	Chippewa Township	8,034	8,030	-4	-0.05%
10	Georgetown Borough	207	203	-4	-1.93%
	10 LOWEST NUMERIC CHANGE				
45	Beaver Borough	4,426	4,352	-74	-1.67%
46	Ambridge Borough	6,952	6,875	-77	-1.11%
47	Baden Borough	3,891	3,809	-82	-2.11%
48	New Brighton Borough	5,642	5,534	-108	-1.91%
49	New Sewickley Township	7,150	7,030	-120	-1.68%
50	Economy Borough	9,084	8,962	-122	-1.34%
51	Monaca Borough	5,610	5,487	-123	-2.19%
52	Hopewell Township	13,490	13,308	-182	-1.35%
53	Aliquippa City	9,218	9,022	-196	-2.13%
54	Beaver Falls City	8,980	8,777	-203	-2.26%

57	Butler County				
	10 LARGEST NUMERIC CHANGE				
1	Slippery Rock Township	6,712	8,426	1,714	25.54%
2	Cranberry Township	33,192	34,516	1,324	3.99%
3	Jackson Township	4,964	5,755	791	15.93%
4	Adams Township	14,854	15,603	749	5.04%
5	Lancaster Township	2,768	3,414	646	23.34%
6	Middlesex Township	6,889	7,375	486	7.05%
7	Slippery Rock Borough	3,168	3,579	411	12.97%
8	Buffalo Township	7,925	8,151	226	2.85%
9	Valencia Borough	539	690	151	28.01%
10	Forward Township	3,063	2,951	134	4.37%
	10 LOWEST NUMERIC CHANGE				
48	Clearfield Township	2,428	2,363	-65	-2.68%
49	Winfield Township	3,368	3,300	-68	-2.02%
50	Center Township	11,645	11,726	-82	-0.70%
51	Penn Township	4,991	4,902	-89	-1.78%
52	Connoquenessing Township	4,258	4,165	-93	-2.18%
53	Summit Township	4,500	4,396	-104	-2.31%
54	Zelienople Borough	3,905	3,791	-114	-2.92%
55	Jefferson Township	5,202	5,071	-131	-2.52%
56	Butler City	13,484	13,099	-385	-2.86%
57	Butler Township	17,230	16,817	-413	-2.40%

**Summary of Municipal Population Ten Largest and Smallest Numeric Change
in Each SPC County 2020-2023**

Numeric change rank within county	Municipality	Mid-Year Population		Numeric Change 2020-2023	Percent Change 2020-2023
		2020	2023		
43	Fayette County				
	10 LARGEST NUMERIC CHANGE				
1	Seven Springs Borough	12	12	0	0.00%
2	Ohiopyle Borough	39	37	-2	-5.13%
3	Markleysburg Borough	241	235	-6	-2.49%
4	Dawson Borough	351	339	-12	-3.42%
5	Stewart Township	620	605	-15	-2.42%
6	Vanderbilt Borough	412	397	-15	-3.64%
7	Fayette City Borough	502	485	-17	-3.39%
8	Newell Borough	512	493	-19	-3.71%
9	Brownsville Borough	2,179	2,102	-19	-0.87%
10	Wharton Township	3,352	3,325	-27	-0.81%
	10 LOWEST NUMERIC CHANGE				
34	Washington Township	895	874	-173	-19.33%
35	German Township	4,659	4,485	-174	-3.73%
36	Georges Township	6,346	6,117	-229	-3.61%
37	Dunbar Township	6,652	6,415	-237	-3.56%
38	Bullskin Township	6,731	6,491	-240	-3.57%
39	Connellsville City	7,019	6,700	-319	-4.54%
40	Luzerne Township	5,582	5,237	-345	-6.18%
41	Uniontown City	9,964	9,577	-387	-3.88%
42	North Union Township	11,814	11,412	-402	-3.40%
43	South Union Township	10,872	10,451	-421	-3.87%

26	Greene County				
	10 LARGEST NUMERIC CHANGE				
1	Gray Township	183	177	-6	-3.28%
2	Greene Township	2,184	2,223	-6	-0.27%
3	Jackson Township	4,964	5,755	-7	-0.14%
4	Clarksville Borough	194	186	-8	-4.12%
5	Freeport Township	268	258	-10	-3.73%
6	Gilmore Township	237	226	-11	-4.64%
7	Jefferson Borough	252	241	-11	-4.37%
8	Greensboro Borough	265	253	-12	-4.53%
9	Wayne Township	1,295	1,269	-13	-1.00%
10	Aleppo Township	1,824	1,773	-13	-0.71%
	10 LOWEST NUMERIC CHANGE				
17	Richhill Township	769	733	-36	-4.68%
18	Center Township	11,645	11,726	-39	-0.33%
19	Monongahela Township	1,485	1,438	-47	-3.16%
20	Perry Township	366	362	-48	-13.11%
21	Dunkard Township	2,167	2,077	-90	-4.15%
22	Jefferson Township	5,202	5,071	-101	-1.94%
23	Morgan Township	2,331	2,224	-107	-4.59%
24	Cumberland Township	6,370	6,146	-224	-3.52%
25	Waynesburg Borough	3,991	3,728	-263	-6.59%
26	Franklin Township	3,876	3,823	-315	-8.13%

**Summary of Municipal Population Ten Largest and Smallest Numeric Change
in Each SPC County 2020-2023**

Numeric change rank within county	Municipality	Mid-Year Population		Numeric Change 2020-2023	Percent Change 2020-2023
		2020	2023		
38	Indiana County				
	10 LARGEST NUMERIC CHANGE				
1	Indiana Borough	14,026	14,289	263	1.88%
2	Canoe Township	1,428	1,428	0	0.00%
3	Ernest Borough	415	415	0	0.00%
4	East Mahoning Township	963	963	0	0.00%
5	Smicksburg Borough	56	56	0	0.00%
6	Armagh Borough	101	100	-1	-0.99%
7	Marion Center Borough	409	408	-1	-0.24%
8	Shelocta Borough	102	101	-1	-0.98%
9	Cherry Tree Borough	271	269	-2	-0.74%
10	Creekside Borough	284	282	-2	-0.70%
	10 LOWEST NUMERIC CHANGE				
29	Armstrong Township	2,760	2,752	-8	-0.29%
30	Young Township	1,691	1,682	-9	-0.53%
31	Blairsville Borough	3,215	3,203	-12	-0.37%
32	Cherryhill Township	2,443	2,429	-14	-0.57%
33	West Wheatfield Township	2,139	2,124	-15	-0.70%
34	Center Township	11,645	11,726	-15	-0.13%
35	Green Township	3,411	3,394	-17	-0.50%
36	Rayne Township	2,784	2,765	-19	-0.68%
37	Burrell Township	656	642	-20	-3.05%
38	White Township	1,314	1,285	-99	-7.53%

27	Lawrence County				
	10 LARGEST NUMERIC CHANGE				
1	Ellport Borough	1,081	1,091	10	0.93%
2	New Wilmington Borough	2,097	2,097	0	0.00%
3	S.N.P.J. Borough	17	17	0	0.00%
4	Volant Borough	127	122	-5	-3.94%
5	Enon Valley Borough	301	294	-7	-2.33%
6	Wampum Borough	556	546	-10	-1.80%
7	North Beaver Township	3,957	3,943	-14	-0.35%
8	South New Castle Borough	648	634	-14	-2.16%
9	Plain Grove Township	776	759	-17	-2.19%
10	Washington Township	895	874	-18	-2.01%
	10 LOWEST NUMERIC CHANGE				
18	Perry Township	366	362	-32	-8.74%
19	Slippery Rock Township	6,712	8,426	-33	-0.49%
20	Wayne Township	1,295	1,269	-43	-3.32%
21	Pulaski Township	1,292	1,264	-56	-4.33%
22	Mahoning Township	1,396	1,365	-61	-4.37%
23	Union Township	4,985	4,883	-102	-2.05%
24	Shenango Township	7,125	7,012	-113	-1.59%
25	Ellwood City Borough	602	589	-157	-26.08%
26	Neshannock Township	9,837	9,669	-168	-1.71%
27	New Castle City	21,902	21,413	-489	-2.23%

**Summary of Municipal Population Ten Largest and Smallest Numeric Change
in Each SPC County 2020-2023**

Numeric change rank within county	Municipality	Mid-Year Population		Numeric Change 2020-2023	Percent Change 2020-2023
		2020	2023		
66	Washington County				
	10 LARGEST NUMERIC CHANGE				
1	North Strabane Township	15,690	16,719	1,029	6.56%
2	Chartiers Township	8,679	9,168	489	5.63%
3	Cecil Township	14,651	15,065	414	2.83%
4	Peters Township	22,958	23,264	306	1.33%
5	Washington City	13,162	13,429	267	2.03%
6	Canton Township	8,212	8,269	57	0.69%
7	Mount Pleasant Township	3,293	3,335	42	1.28%
8	Union Township	4,985	4,883	32	0.64%
9	Nottingham Township	2,936	2,955	19	0.65%
10	West Finley Township	813	829	16	1.97%
	10 LOWEST NUMERIC CHANGE				
57	Smith Township	4,233	4,198	-35	-0.83%
58	Centerville Borough	3,258	3,222	-36	-1.10%
59	North Franklin Township	4,824	4,767	-57	-1.18%
60	Monongahela City	4,147	4,087	-60	-1.45%
61	Donora Borough	4,561	4,500	-61	-1.34%
62	Charleroi Borough	4,235	4,174	-61	-1.44%
63	Fallowfield Township	4,100	4,038	-62	-1.51%
64	Carroll Township	5,380	5,315	-65	-1.21%
65	Canonsburg Borough	9,748	9,629	-119	-1.22%
66	California Borough	5,361	4,639	-722	-13.47%

65	Westmoreland County				
	10 LARGEST NUMERIC CHANGE				
1	Penn Township	4,991	4,902	468	9.38%
2	Penn Borough	436	620	184	42.20%
3	Hempfield Township	41,518	41,613	95	0.23%
4	Rostraver Township	11,382	11,420	38	0.33%
5	Donegal Borough	102	100	-2	-1.96%
6	Sutersville Borough	552	550	-2	-0.36%
7	Adamsburg Borough	145	142	-3	-2.07%
8	Laurel Mountain Borough	146	143	-3	-2.05%
9	Delmont Borough	2,611	2,607	-4	-0.15%
10	Arona Borough	253	248	-5	-1.98%
	10 LOWEST NUMERIC CHANGE				
56	Mount Pleasant Township	3,293	3,335	-130	-3.95%
57	Latrobe Borough	8,058	7,922	-136	-1.69%
58	Monessen City	6,861	6,723	-138	-2.01%
59	Jeannette City	8,765	8,591	-174	-1.99%
60	Lower Burrell City	11,739	11,561	-178	-1.52%
61	Derry Township	13,601	13,422	-179	-1.32%
62	Murrysville Municipality	20,961	20,745	-216	-1.03%
63	New Kensington City	12,150	11,911	-239	-1.97%
64	Unity Township	21,591	21,311	-280	-1.30%
65	Greensburg City	14,903	14,603	-300	-2.01%

Census Bureau 2020-2023 Total Population Estimates by County in the SPC Region

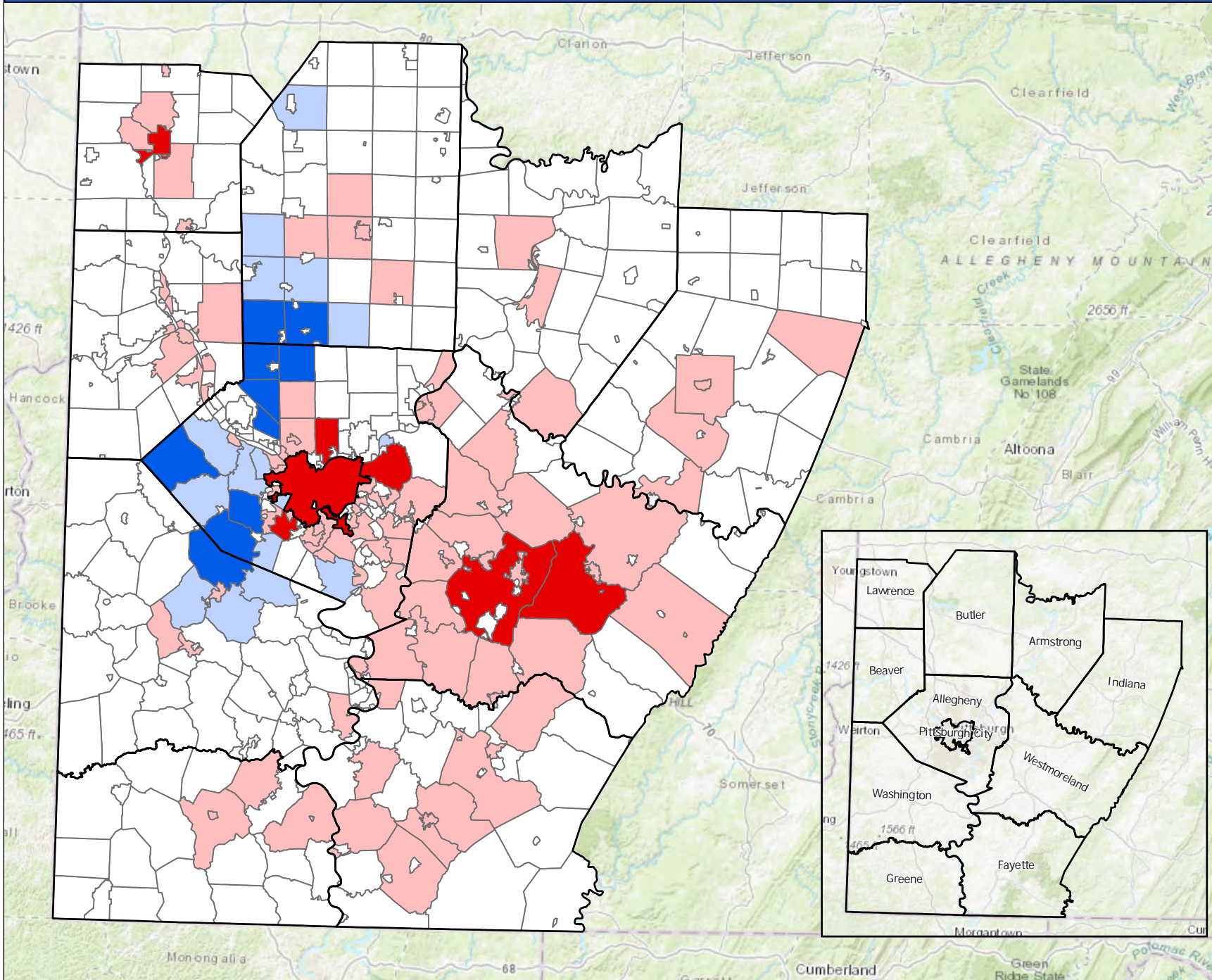
County/Pittsburgh	2020 Population Estimate	2021 Population Estimate	2022 Population Estimate	2023 Population Estimate	2024 Population Estimate	2025 Population Estimate	2026 Population Estimate	2027 Population Estimate	2028 Population Estimate	2029 Population Estimate	2030 Population Estimate	2020-2023 Population Change	2020-2023 Percent Change
Pittsburgh City	302,779	305,400	302,799	303,255								476	0.16%
Rest of Allegheny County	946,786	939,820	929,806	921,570								-25,216	-2.66%
Allegheny County	1,249,565	1,245,220	1,232,605	1,224,825								-24,740	-1.98%
Armstrong County	65,470	65,212	64,704	64,074								-1,396	-2.13%
Beaver County	167,873	166,967	165,737	165,631								-2,242	-1.34%
Butler County	194,077	196,759	197,368	198,413								4,336	2.23%
Fayette County	128,588	127,122	125,368	123,915								-4,673	-3.63%
Greene County	35,868	35,284	34,529	34,357								-1,511	-4.21%
Indiana County	83,151	83,201	83,064	83,094								-57	-0.07%
Lawrence County	85,970	85,554	84,812	84,472								-1,498	-1.74%
Washington County	209,434	210,054	209,940	210,232								798	0.38%
Westmoreland County	354,346	353,717	351,998	351,163								-3,183	-0.90%
SPC Region	2,574,342	2,569,090	2,550,125	2,540,176								-34,166	-1.33%
Pennsylvania	12,995,477	13,013,614	12,972,091	12,961,683								-33,794	-0.26%

The Census Bureau estimates the 2021-2030 data based off on the 2020 Decennial Census.

Source: Annual Estimates of Resident Municipal Population April 1 2020 to July 1 2023, released by the Census Bureau on May 14, 2024

Population Change in the SPC Region, 2010-2020

Annual Estimates of the Resident Municipal Population April 1, 2010 to July 1, 2020



Legend

Population Change by Municipality

- Less than -1000
- -1000 to -250
- -250 to 250
- 250 to 1000
- Greater than 1000
- Counties

The municipality with greatest negative change in the SPC Region (-6,125) is City of Pittsburgh, located in Allegheny County.

The municipality with greatest positive change in the SPC Region (+ 3,987) is Cranberry Township, located in Butler County.

Estimates released by the Census Bureau on May 27, 2021.



**Summary of Municipal Population Ten Largest and Smallest Numeric Change
in Each SPC County 2010-2020**

Numeric change rank within county	Municipality	Mid-year population		Numeric change 2010-2020	Percent change 2010-2020
		2010	2020		
130	Allegheny County				
	10 LARGEST NUMERIC CHANGE				
1	Marshall township	6,941	9,869	2,928	42.18%
2	Pine township	11,516	13,941	2,425	21.06%
3	Ohio township	4,849	6,917	2,068	42.65%
4	South Fayette township	14,417	15,937	1,520	10.54%
5	Franklin Park borough	13,544	14,883	1,339	9.89%
6	Collier township	7,134	8,247	1,113	15.60%
7	Findlay township	5,066	6,157	1,091	21.54%
8	Moon township	24,239	25,204	965	3.98%
9	North Fayette township	13,970	14,917	947	6.78%
10	Robinson township	13,375	13,876	501	3.75%
	10 SMALLEST NUMERIC CHANGE				
121	Wilkesburg borough	15,858	15,186	-672	-4.24%
122	Scott township	17,035	16,314	-721	-4.23%
123	West Mifflin borough	20,309	19,588	-721	-3.55%
124	Ross township	31,105	30,362	-743	-2.39%
125	McKeesport city	19,729	18,927	-802	-4.07%
126	Monroeville municipality	28,351	27,393	-958	-3.38%
127	Shaler township	28,709	27,527	-1,182	-4.12%
128	Mount Lebanon township	32,796	31,418	-1,378	-4.20%
129	Penn Hills township	42,383	40,517	-1,866	-4.40%
130	Pittsburgh city	305,351	299,226	-6,125	-2.01%

45	Armstrong County				
	10 LARGEST NUMERIC CHANGE				
1	Atwood borough	107	100	-7	-6.54%
2	Hovey township	97	87	-10	-10.31%
3	Washington township	923	910	-13	-1.41%
4	Ford Cliff borough	370	347	-23	-6.22%
5	Applewold borough	309	284	-25	-8.09%
6	Elderton borough	357	332	-25	-7.00%
7	Manorville borough	409	383	-26	-6.36%
8	Cadogan township	352	325	-27	-7.67%
9	Perry township	352	324	-28	-7.95%
10	Pine township	408	376	-32	-7.84%
	10 SMALLEST NUMERIC CHANGE				
36	Leechburg borough	2,147	1,969	-178	-8.29%
37	Cowanshannock township	2,900	2,714	-186	-6.41%
38	Plumcreek township	2,379	2,191	-188	-7.90%
39	Gilpin township	2,575	2,377	-198	-7.69%
40	Parks township	2,739	2,536	-203	-7.41%
41	Ford City borough	2,983	2,735	-248	-8.31%
42	East Franklin township	4,063	3,804	-259	-6.37%
43	Manor township	4,263	4,003	-260	-6.10%
44	Kittanning borough	4,008	3,684	-324	-8.08%
45	Kiskiminetas township	4,814	4,431	-383	-7.96%

**Summary of Municipal Population Ten Largest and Smallest Numeric Change
in Each SPC County 2010-2020**

Numeric change rank within county	Municipality	Mid-year population		Numeric change 2010-2020	Percent change 2010-2020
		2010	2020		
54	Beaver County				
	10 LARGEST NUMERIC CHANGE				
1	Bridgewater borough	709	817	108	15.23%
2	Economy borough	9,009	9,022	13	0.14%
3	Potter township	551	560	9	1.63%
4	Brighton township	8,237	8,236	-1	-0.01%
5	Glasgow borough	60	58	-2	-3.33%
6	Frankfort Springs borough	130	121	-9	-6.92%
7	Hookstown borough	147	137	-10	-6.80%
8	Homewood borough	132	121	-11	-8.33%
9	Georgetown borough	172	160	-12	-6.98%
10	Darlington borough	253	234	-19	-7.51%
	10 SMALLEST NUMERIC CHANGE				
45	Rochester borough	3,660	3,406	-254	-6.94%
46	Baden borough	4,128	3,839	-289	-7.00%
47	New Sewickley township	7,381	7,092	-289	-3.92%
48	Beaver borough	4,526	4,222	-304	-6.72%
49	Center township	11,790	11,436	-354	-3.00%
50	Monaca borough	5,738	5,364	-374	-6.52%
51	New Brighton borough	6,021	5,622	-399	-6.63%
52	Ambridge borough	7,050	6,535	-515	-7.30%
53	Aliquippa city	9,425	8,743	-682	-7.24%
54	Beaver Falls city	8,994	8,255	-739	-8.22%

57	Butler County				
	10 LARGEST NUMERIC CHANGE				
1	Cranberry township	28,147	32,134	3,987	14.16%
2	Adams township	11,680	13,980	2,300	19.69%
3	Jackson township	3,685	4,573	888	24.10%
4	Valencia borough	555	1,360	805	145.05%
5	Slippery Rock township	5,638	6,304	666	11.81%
6	Middlesex township	5,395	6,040	645	11.96%
7	Forward township	2,541	3,018	477	18.77%
8	Lancaster township	2,536	2,863	327	12.89%
9	Connoquenessing borough	527	709	182	34.54%
10	Buffalo township	7,328	7,510	182	2.48%
	10 SMALLEST NUMERIC CHANGE				
48	Seven Fields borough	2,892	2,740	-152	-5.26%
49	Oakland township	2,988	2,829	-159	-5.32%
50	Penn township	5,073	4,907	-166	-3.27%
51	Zelienople borough	3,813	3,623	-190	-4.98%
52	Summit township	4,857	4,609	-248	-5.11%
53	Jefferson township	5,511	5,237	-274	-4.97%
54	Center township	7,899	7,596	-303	-3.84%
55	Connoquenessing township	4,167	3,851	-316	-7.58%
56	Butler township	17,246	16,418	-828	-4.80%
57	Butler city	13,756	12,847	-909	-6.61%

**Summary of Municipal Population Ten Largest and Smallest Numeric Change
in Each SPC County 2010-2020**

Numeric change rank within county	Municipality	Mid-year population		Numeric change 2010-2020	Percent change 2010-2020
		2010	2020		
43	Fayette County				
	10 LARGEST NUMERIC CHANGE				
1	Seven Springs borough	13	12	-1	-7.69%
2	Ohiopyle borough	63	59	-4	-6.35%
3	Markleysburg borough	292	280	-12	-4.11%
4	Dawson borough	366	343	-23	-6.28%
5	Vanderbilt borough	484	454	-30	-6.20%
6	Newell borough	524	492	-32	-6.11%
7	Fayette City borough	607	569	-38	-6.26%
8	Brownsville township	677	635	-42	-6.20%
9	Stewart township	725	680	-45	-6.21%
10	Everson borough	790	744	-46	-5.82%
	10 SMALLEST NUMERIC CHANGE				
34	Washington township	3,891	3,570	-321	-8.25%
35	German township	5,057	4,732	-325	-6.43%
36	Redstone township	5,573	5,241	-332	-5.96%
37	Georges township	6,588	6,156	-432	-6.56%
38	Bullskin township	6,967	6,530	-437	-6.27%
39	Dunbar township	7,123	6,681	-442	-6.21%
40	Connellsville city	7,744	7,288	-456	-5.89%
41	South Union township	10,687	10,106	-581	-5.44%
42	Uniontown city	10,337	9,632	-705	-6.82%
43	North Union township	12,721	11,906	-815	-6.41%

26	Greene County				
	10 LARGEST NUMERIC CHANGE				
1	Clarksville borough	229	213	-16	-6.99%
2	Wayne township	1,192	1,174	-18	-1.51%
3	Greensboro borough	257	238	-19	-7.39%
4	Gray township	218	198	-20	-9.17%
5	Freeport township	296	275	-21	-7.09%
6	Jefferson borough	271	249	-22	-8.12%
7	Jackson township	486	459	-27	-5.56%
8	Gilmore township	272	241	-31	-11.40%
9	Aleppo township	504	471	-33	-6.55%
10	Springhill township	351	315	-36	-10.26%
	10 SMALLEST NUMERIC CHANGE				
17	Richhill township	900	811	-89	-9.89%
18	Washington township	1,092	985	-107	-9.80%
19	Perry township	1,510	1,389	-121	-8.01%
20	Center township	1,268	1,142	-126	-9.94%
21	Dunkard township	2,381	2,210	-171	-7.18%
22	Jefferson township	2,350	2,158	-192	-8.17%
23	Morgan township	2,574	2,319	-255	-9.91%
24	Waynesburg borough	4,195	3,857	-338	-8.06%
25	Franklin township	7,251	6,746	-505	-6.96%
26	Cumberland township	6,615	6,091	-524	-7.92%

**Summary of Municipal Population Ten Largest and Smallest Numeric Change
in Each SPC County 2010-2020**

Numeric change rank within county	Municipality	Mid-year population		Numeric change 2010-2020	Percent change 2010-2020
		2010	2020		
38	Indiana County				
	10 LARGEST NUMERIC CHANGE				
1	Smicksburg borough	46	42	-4	-8.70%
2	Armagh borough	122	115	-7	-5.74%
3	Shelocta borough	126	116	-10	-7.94%
4	Glen Campbell borough	245	226	-19	-7.76%
5	Creekside borough	309	288	-21	-6.80%
6	Plumville borough	307	286	-21	-6.84%
7	Cherry Tree borough	362	334	-28	-7.73%
8	Ernest borough	462	431	-31	-6.71%
9	Marion Center borough	451	417	-34	-7.54%
10	Grant township	737	687	-50	-6.78%
	10 SMALLEST NUMERIC CHANGE				
29	West Wheatfield township	2,312	2,138	-174	-7.53%
30	Armstrong township	3,008	2,832	-176	-5.85%
31	Cherryhill township	2,763	2,587	-176	-6.37%
32	Blairsville borough	3,402	3,204	-198	-5.82%
33	Rayne township	2,992	2,781	-211	-7.05%
34	Green township	3,847	3,578	-269	-6.99%
35	Burrell township	4,399	4,101	-298	-6.77%
36	Center township	4,765	4,435	-330	-6.93%
37	White township	15,845	15,495	-350	-2.21%
38	Indiana borough	13,963	13,120	-843	-6.04%

27	Lawrence County				
	10 LARGEST NUMERIC CHANGE				
1	S.N.P.J. borough	19	18	-1	-5.26%
2	Volant borough	165	150	-15	-9.09%
3	Enon Valley borough	307	282	-25	-8.14%
4	Washington township	797	763	-34	-4.27%
5	Ellwood City borough	621	577	-44	-7.09%
6	Plain Grove township	800	753	-47	-5.88%
7	Wampum borough	707	654	-53	-7.50%
8	South New Castle borough	713	659	-54	-7.57%
9	Bessemer borough	1,107	1,045	-62	-5.60%
10	Ellport borough	1,175	1,102	-73	-6.21%
	10 SMALLEST NUMERIC CHANGE				
18	Wayne township	2,698	2,533	-165	-6.12%
19	North Beaver township	4,118	3,932	-186	-4.52%
20	Slippery Rock township	3,270	3,070	-200	-6.12%
21	Pulaski township	3,443	3,218	-225	-6.53%
22	Mahoning township	3,076	2,842	-234	-7.61%
23	New Wilmington borough	2,463	2,205	-258	-10.48%
24	Union township	5,178	4,812	-366	-7.07%
25	Shenango township	7,468	7,080	-388	-5.20%
26	Neshannock township	9,614	9,166	-448	-4.66%
27	New Castle city	23,243	21,472	-1,771	-7.62%

**Summary of Municipal Population Ten Largest and Smallest Numeric Change
in Each SPC County 2010-2020**

Numeric change rank within county	Municipality	Mid-year population		Numeric change 2010-2020	Percent change 2010-2020
		2010	2020		
66	Washington County				
	10 LARGEST NUMERIC CHANGE				
1	Cecil township	11,331	13,220	1,889	16.67%
2	North Strabane township	13,431	14,429	998	7.43%
3	Peters township	21,226	22,118	892	4.20%
4	Chartiers township	7,842	8,299	457	5.83%
5	South Strabane township	9,327	9,449	122	1.31%
6	Mount Pleasant township	3,513	3,532	19	0.54%
7	Green Hills borough	22	21	-1	-4.55%
8	Dunlevy borough	413	408	-5	-1.21%
9	Morris township	1,101	1,096	-5	-0.45%
10	Stockdale borough	506	500	-6	-1.19%
	10 SMALLEST NUMERIC CHANGE				
57	Smith township	4,488	4,347	-141	-3.14%
58	Fallowfield township	4,340	4,145	-195	-4.49%
59	Monongahela city	4,297	4,090	-207	-4.82%
60	Charleroi borough	4,095	3,887	-208	-5.08%
61	Carroll township	5,622	5,404	-218	-3.88%
62	Donora borough	4,778	4,546	-232	-4.86%
63	Canonsburg borough	9,015	8,751	-264	-2.93%
64	Canton township	8,380	8,027	-353	-4.21%
65	California borough	6,784	6,261	-523	-7.71%
66	Washington city	14,026	13,249	-777	-5.54%

65	Westmoreland County				
	10 LARGEST NUMERIC CHANGE				
1	Manor borough	3,203	3,322	119	3.72%
2	Trafford borough	111	107	-4	-3.60%
3	Donegal borough	117	109	-8	-6.84%
4	Adamsburg borough	172	161	-11	-6.40%
5	Laurel Mountain borough	165	153	-12	-7.27%
6	Hunker borough	287	268	-19	-6.62%
7	Youngstown borough	324	302	-22	-6.79%
8	Arona borough	370	343	-27	-7.30%
9	Madison borough	391	363	-28	-7.16%
10	Smithton borough	397	369	-28	-7.05%
	10 SMALLEST NUMERIC CHANGE				
56	Mount Pleasant township	10,922	10,364	-558	-5.11%
57	Penn township	20,035	19,473	-562	-2.81%
58	Murrysville municipality	20,066	19,446	-620	-3.09%
59	Jeannette city	9,666	9,000	-666	-6.89%
60	Lower Burrell city	11,755	10,997	-758	-6.45%
61	Greensburg city	14,885	14,082	-803	-5.39%
62	Derry township	14,500	13,685	-815	-5.62%
63	New Kensington city	13,105	12,188	-917	-7.00%
64	Unity township	22,604	21,600	-1,004	-4.44%
65	Hempfield township	43,240	40,558	-2,682	-6.20%

Census Bureau 2010-2020 Total Population Estimates by County in the SPC Region

County/Pittsburgh	2010 Population Estimate	2011 Population Estimate	2012 Population Estimate	2013 Population Estimate	2014 Population Estimate	2015 Population Estimate	2016 Population Estimate	2017 Population Estimate	2018 Population Estimate	2019 Population Estimate	2020 Population Estimate	2010-2020 Population Change	2010-2020 Percent Change
Pittsburgh city	305,351	306,117	306,455	307,006	306,080	304,224	304,789	301,606	300,669	300,056	299,226	-6,125	-2.01%
Rest of Allegheny County	918,622	922,320	924,674	926,993	927,337	925,118	922,104	918,817	916,839	915,660	912,132	-6,490	-0.71%
Allegheny County	1,223,973	1,228,437	1,231,129	1,233,999	1,233,417	1,229,342	1,226,893	1,220,423	1,217,508	1,215,716	1,211,358	-12,615	-1.03%
Armstrong County	69,029	68,661	68,223	68,015	67,631	66,913	66,464	66,042	65,411	64,699	64,162	-4,867	-7.05%
Beaver County	170,630	170,330	170,091	169,770	169,033	168,311	166,926	165,779	164,669	163,956	162,575	-8,055	-4.72%
Butler County	184,085	184,766	185,016	185,185	185,874	186,046	186,427	187,083	188,031	188,313	189,135	5,050	2.74%
Fayette County	136,431	136,008	135,283	134,610	134,009	133,272	132,371	131,340	130,452	129,422	128,126	-8,305	-6.09%
Greene County	38,616	38,377	38,048	37,880	37,781	37,431	37,222	36,875	36,639	36,062	35,621	-2,995	-7.76%
Indiana County	88,864	88,639	88,243	88,178	87,459	86,800	85,243	84,809	84,578	84,022	83,664	-5,200	-5.85%
Lawrence County	91,016	90,526	89,895	89,274	88,668	88,154	87,379	86,608	86,164	85,504	85,083	-5,933	-6.52%
Washington County	207,944	208,089	208,350	208,117	208,050	207,824	207,469	207,152	207,114	206,866	206,803	-1,141	-0.55%
Westmoreland County	365,029	364,450	362,825	360,720	358,931	357,006	354,763	352,152	350,600	348,941	347,087	-17,942	-4.92%
SPC Region	2,575,617	2,578,283	2,577,103	2,575,748	2,570,853	2,561,099	2,551,157	2,538,263	2,531,166	2,523,501	2,513,614	-62,003	-2.41%
Pennsylvania	12,711,406	12,747,052	12,769,123	12,779,538	12,792,392	12,789,838	12,788,468	12,794,679	12,809,107	12,798,883	12,783,254	71,848	0.57%

The Census Bureau estimates the 2011-2020 data based on the 2010 Decennial Census.

Source: Annual Estimates of the Resident Municipal Population April 1, 2010 to July 1, 2020, released by the Census Bureau on May 27, 2021.