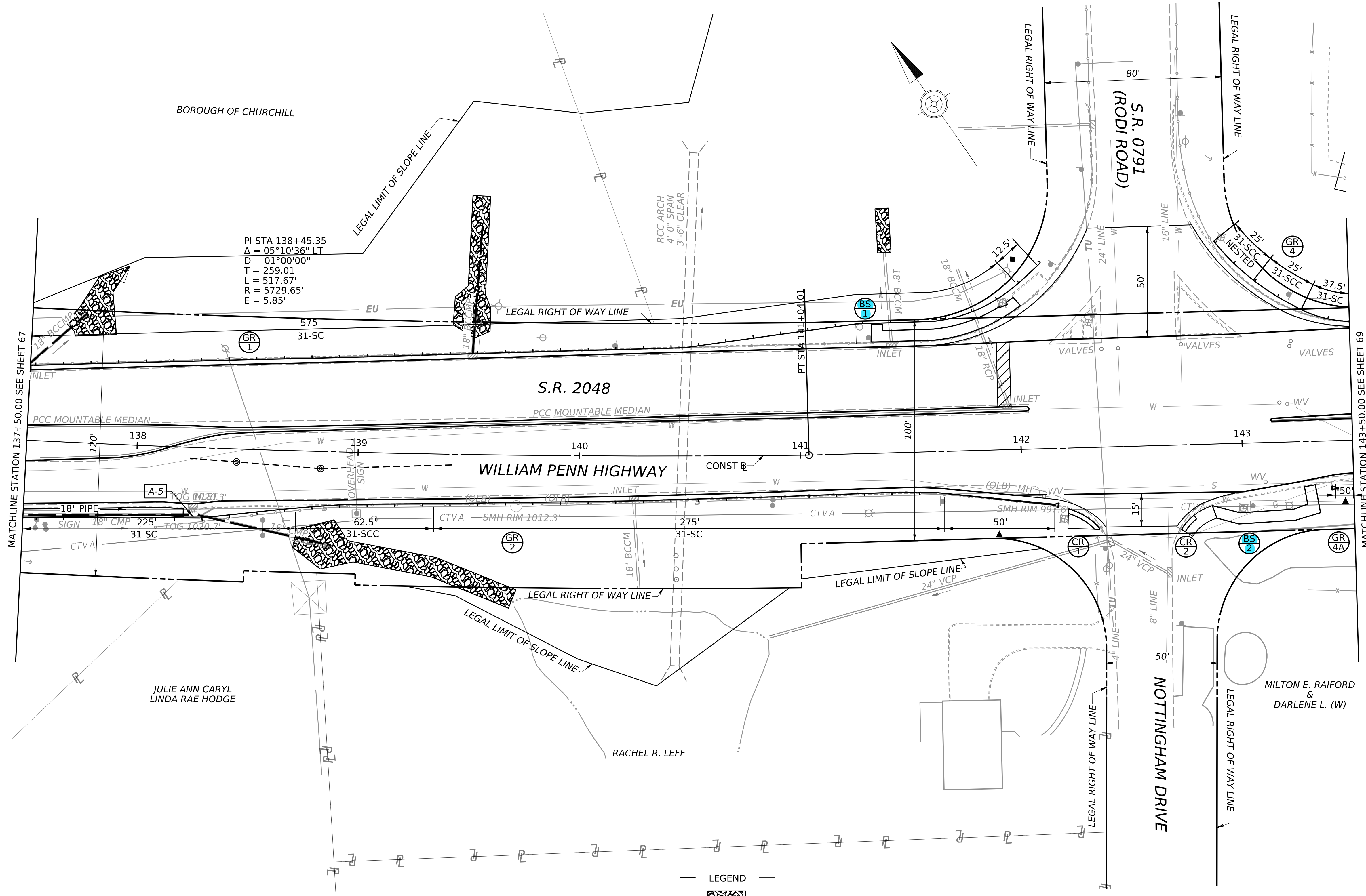
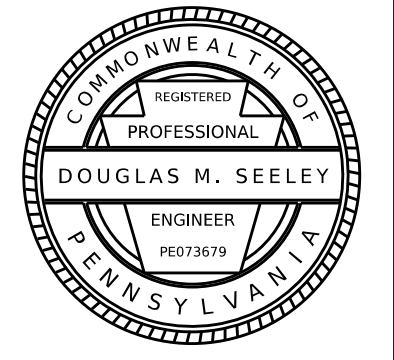


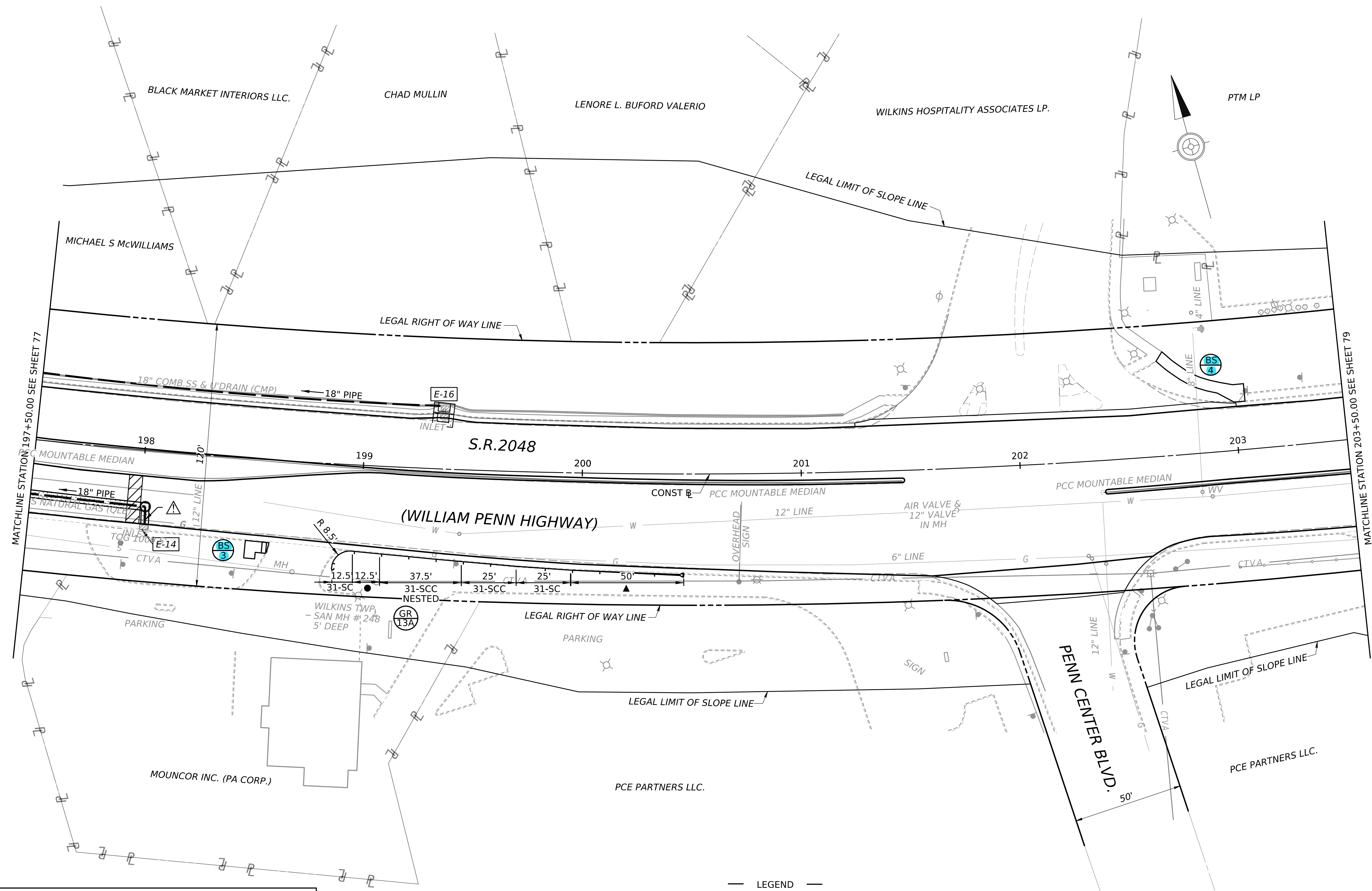
|                   |           |       |         |           |    |      |
|-------------------|-----------|-------|---------|-----------|----|------|
| DISTRICT          | COUNTY    | ROUTE | SECTION | SHEET     |    |      |
| 11-0              | ALLEGHENY | 2048  | A14     | 68 OF 103 |    |      |
| CHURCHILL BOROUGH |           |       |         |           |    |      |
| REV NO            | REVISIONS |       |         | DATE      | BY | APPD |
|                   |           |       |         |           |    |      |



- LEGEND
- ROCK LINING
  - CONCRETE PATCHING
  - TYPE 31-STRONG POST ANCHOR TERMINAL
  - PERMANENT IMPACT ATTENUATING DEVICE, TYPE II, TEST LEVEL 3, TANGENT (MASH)



|                  |           |       |         |           |
|------------------|-----------|-------|---------|-----------|
| DISTRICT         | COUNTY    | ROUTE | SECTION | SHEET     |
| 11-0             | ALLEGHENY | 2048  | A14     | 78 OF 103 |
| WILKINS TOWNSHIP |           |       |         |           |
| REV NO           | REVISIONS | DATE  | BY      | APPD      |
|                  |           |       |         |           |

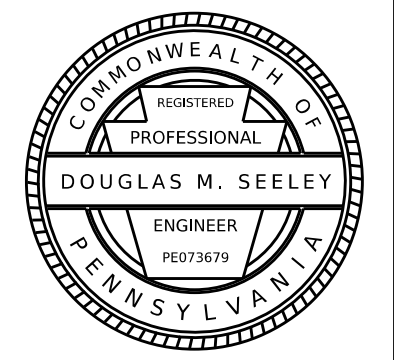


- UTILITY CROSSING NOTES:**
1. USE CAUTION IN GUIDE RAIL INSTALLATION - ADJUST POST SPACING AS REQUIRED.
  2. MAINTAIN ALL EXISTING INVERT ELEVATIONS FOR DRAINAGE REPLACEMENT. USE CAUTION AROUND EXISTING UTILITIES WHERE ENCOUNTERED.
  3. THE DEPARTMENT OF TRANSPORTATION DOES NOT GUARANTEE THE ACCURACY OF THE LOCATION FOR EXISTING SUBSURFACE UTILITY STRUCTURES SHOWN ON THE PLAN, NOR DOES THE DEPARTMENT GUARANTEE THAT ALL SUBSURFACE STRUCTURES ARE SHOWN.

**LEGEND**

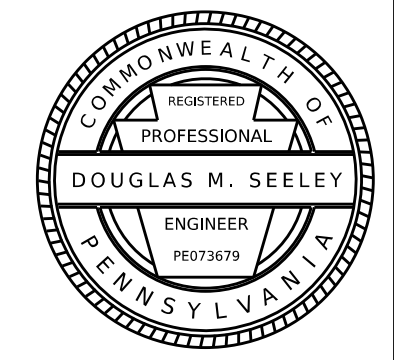
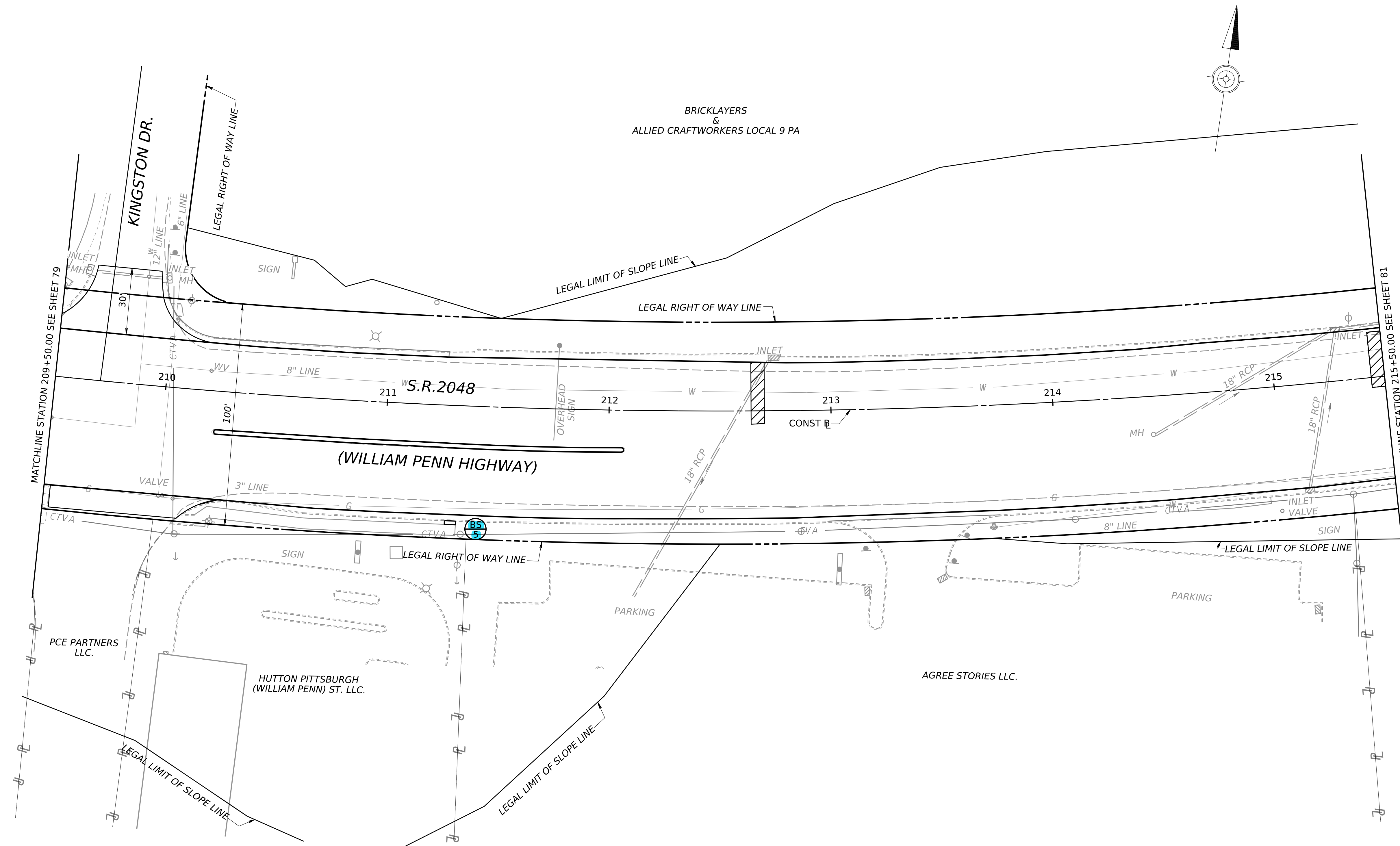
- PIPE TRENCH / INLET PAVEMENT REPAIR
- CONCRETE PATCHING
- TYPE 31-STRONG POST IN-LINE ANCHOR
- PERMANENT IMPACT ATTENUATING DEVICE, TYPE II, TEST LEVEL 3, TANGENT (MASH)

25 0 25 FEET

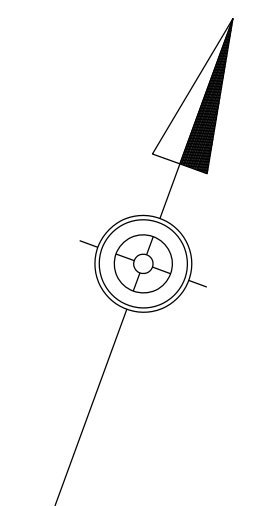
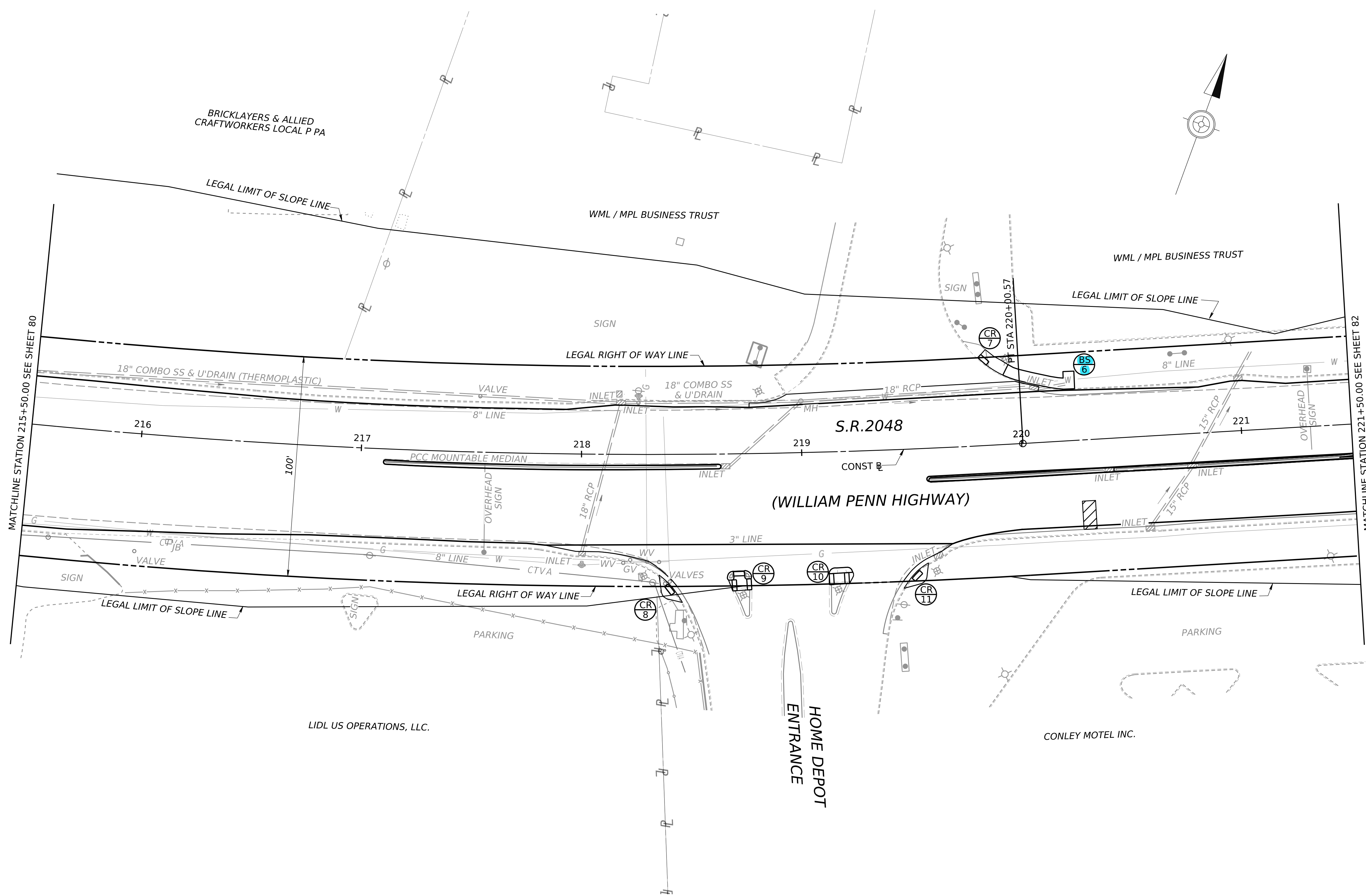




|                  |           |       |         |           |
|------------------|-----------|-------|---------|-----------|
| DISTRICT         | COUNTY    | ROUTE | SECTION | SHEET     |
| 11-0             | ALLEGHENY | 2048  | A14     | 80 OF 103 |
| WILKINS TOWNSHIP |           |       |         |           |
| REV NO           | REVISIONS | DATE  | BY      | APPD      |
|                  |           |       |         |           |

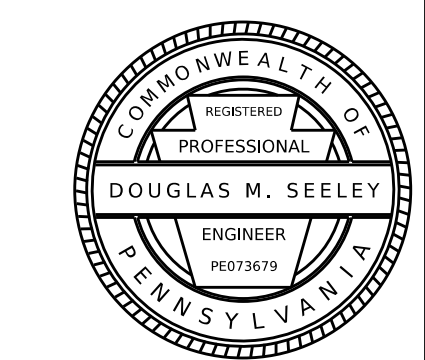
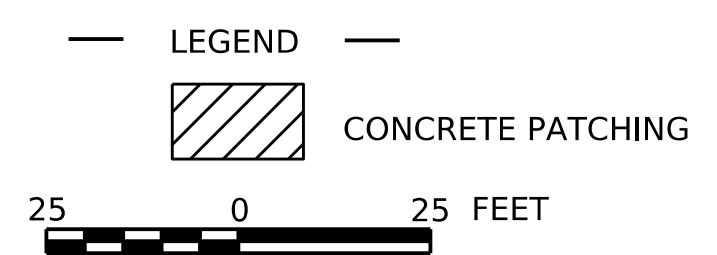


|                  |           |       |         |           |
|------------------|-----------|-------|---------|-----------|
| DISTRICT         | COUNTY    | ROUTE | SECTION | SHEET     |
| 11-0             | ALLEGHENY | 2048  | A14     | 81 OF 103 |
| WILKINS TOWNSHIP |           |       |         |           |
| REV NO           | REVISIONS | DATE  | BY      | APPD      |
|                  |           |       |         |           |



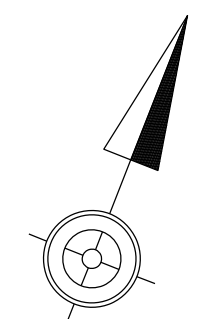
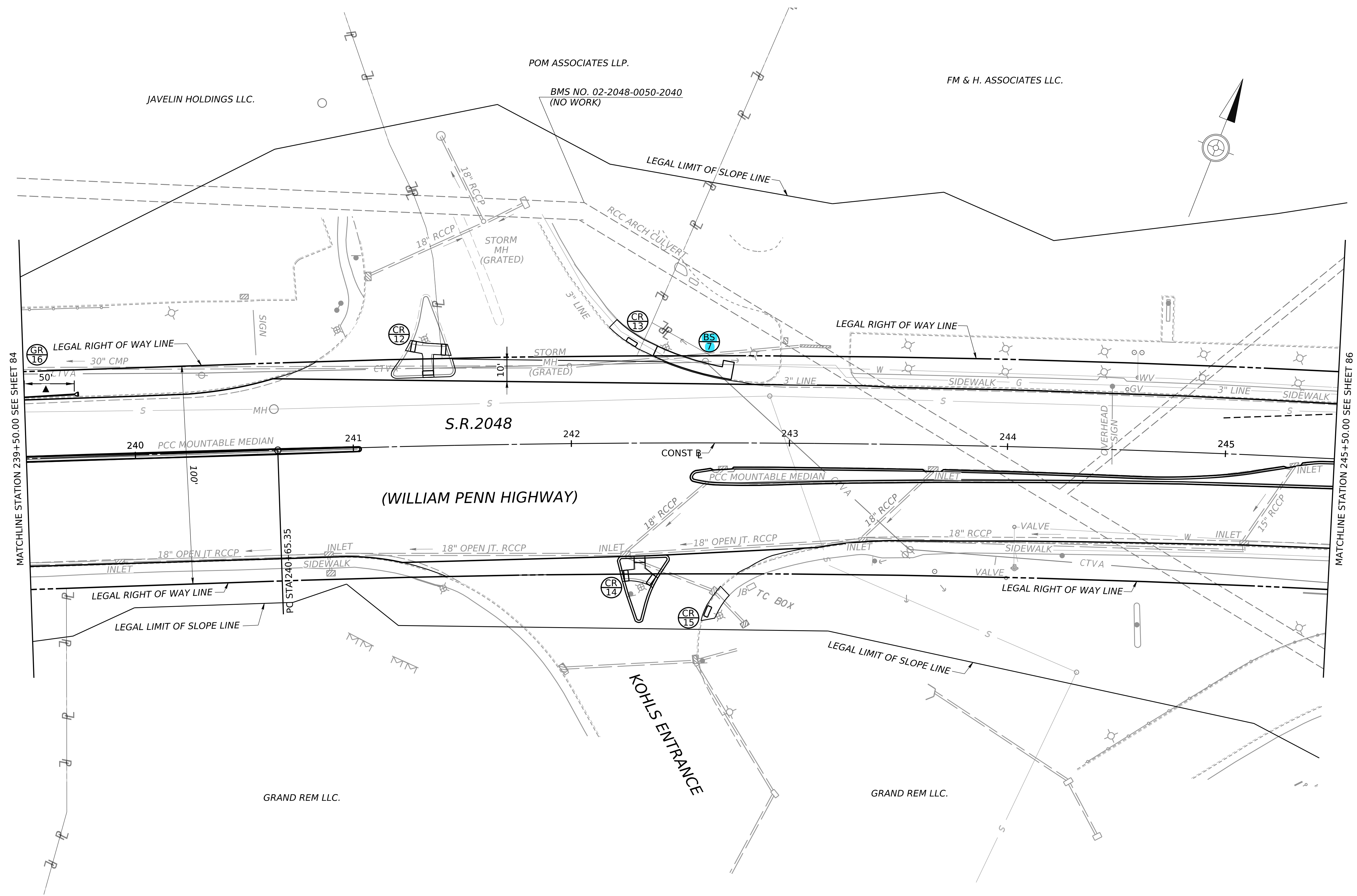
MATCHLINE STATION 215+50.00 SEE SHEET 80

MATCHLINE STATION 221+50.00 SEE SHEET 82



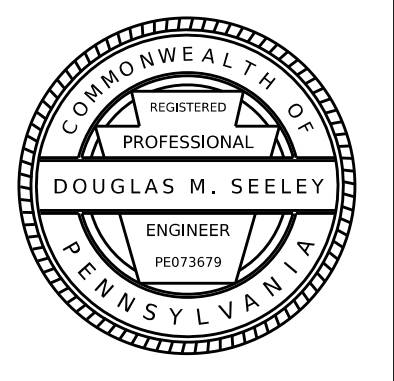


|                             |           |       |         |           |
|-----------------------------|-----------|-------|---------|-----------|
| DISTRICT                    | COUNTY    | ROUTE | SECTION | SHEET     |
| 11-0                        | ALLEGHENY | 2048  | A14     | 85 OF 103 |
| MUNICIPALITY OF MONROEVILLE |           |       |         |           |
| REV NO                      | REVISIONS | DATE  | BY      | APPD      |
|                             |           |       |         |           |

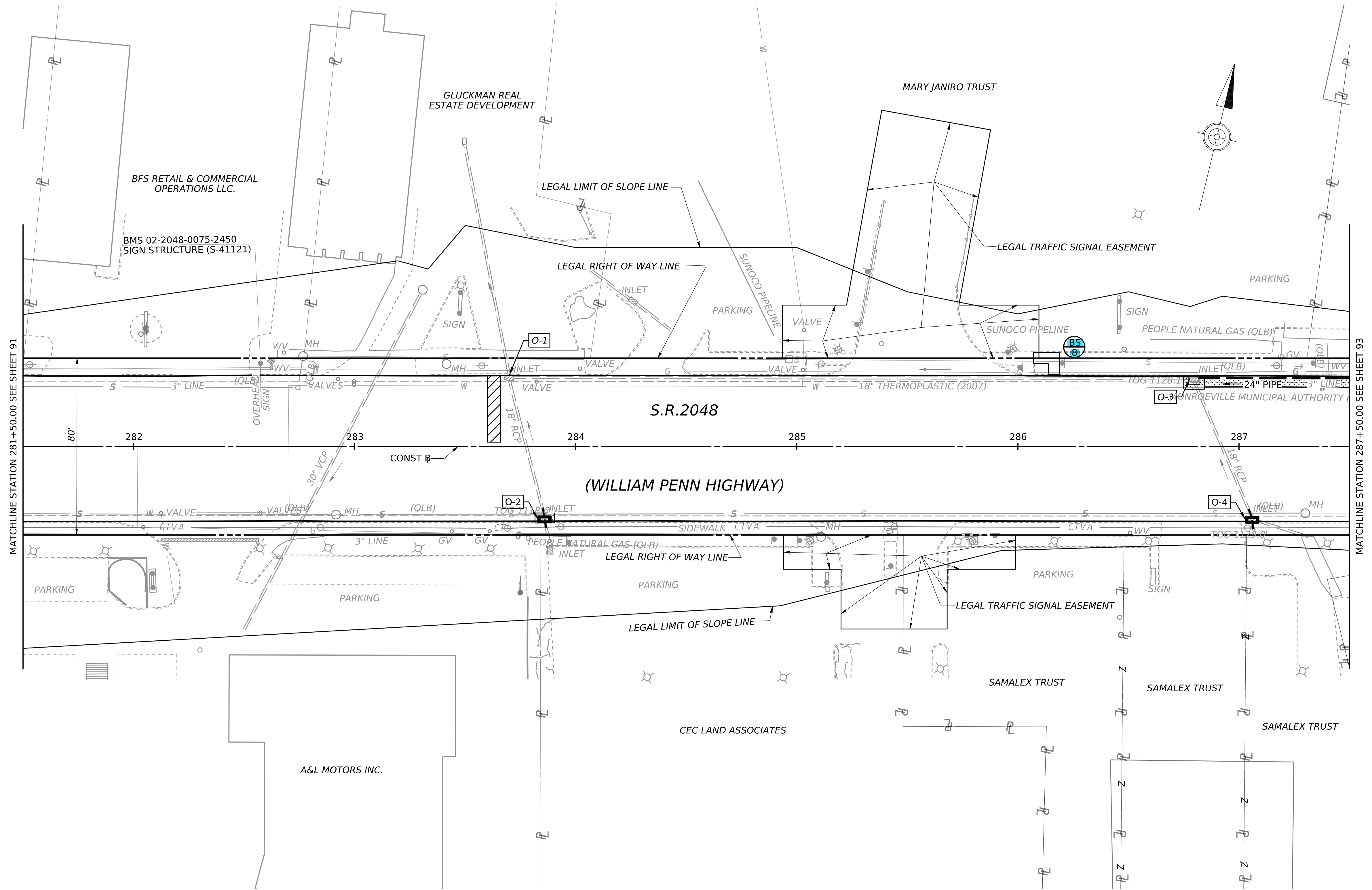


— LEGEND —

▲ PERMANENT IMPACT ATTENUATING DEVICE, TYPE II, TEST LEVEL 3, TANGENT (MASH)



|                             |           |       |         |           |
|-----------------------------|-----------|-------|---------|-----------|
| DISTRICT                    | COUNTY    | ROUTE | SECTION | SHEET     |
| 11-0                        | ALLEGHENY | 2048  | A14     | 92 OF 103 |
| MUNICIPALITY OF MONROEVILLE |           |       |         |           |
| REV NO                      | REVISIONS | DATE  | BY      | APPD      |
|                             |           |       |         |           |



MATCHLINE STATION 281+50.00 SEE SHEET 91

MATCHLINE STATION 287+50.00 SEE SHEET 93

