

FACT SHEET

REGIONAL CLIMATE POLLUTION REDUCTION PLAN



The Southwestern Pennsylvania Commission (SPC) continues to work with community partners throughout the region to create jobs, spur economic development, and improve the health and quality of life by investing in its communities and developing a Regional Climate Pollution Reduction Plan (CPRP). The development of the plan is supported by a \$1M planning grant from the U.S. Environmental Protection Agency (EPA), that covers all 10 counties of Southwestern Pennsylvania.

In the planning phase, our organization is identifying climate pollution sources, prioritizing greenhouse gas emission (GHG) reductions, and creating short- and long-term action plans. The first part of the CPRP, the Priority Climate Action Plan (PCAP), was completed in March 2024, and the second part, the Comprehensive Climate Action Plan (CCAP), will be finished by mid-2025. During the upcoming implementation phase, we will work with partners to develop a range of emissions-reduction projects aligned with the goals outlined in the PCAP and CCAP.

What is Climate Pollution?



Climate pollution encompasses greenhouse gas emissions from activities such as agriculture, electricity use, solid waste, stationary sources such as energy used by buildings and factories, transportation, and wastewater. Emissions caused by these activities are summarized across four sectors: Commercial/Institutional, Energy Generation, Industrial, and Residential.

Planning for Equitable Outcomes

Low-income and disadvantaged communities (LIDACs)

LIDAC census tracts were identified by the Federal Government's Climate and Economic Justice Screening Tool (CJEST). This is done to ensure equitable participation and that emissions reduction projects create equitable benefits.

In Southwestern Pennsylvania:

There are **201** disadvantaged census tracts that have been identified, representing more than **500,000** people.

50%

of those people live in Allegheny County.

Regional Hazard Risk Factors

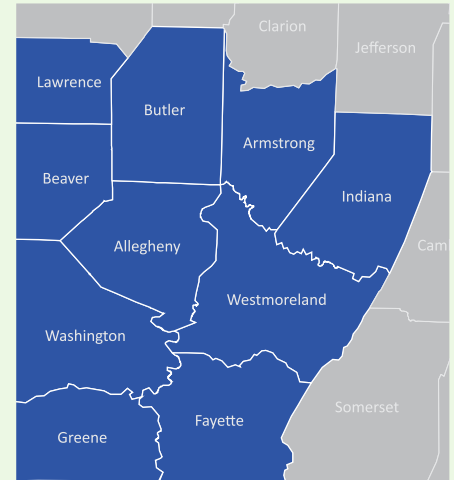


Riverine Flooding



Landslides

SPC's 10-County Region



Southwestern Pennsylvania represents and/or accounts for the following:

15%
of the state's
land area

Approximately
20%
of the state's
population

Approximately
22%
of the state's
total emissions

Of the 10 counties,
Allegheny has **48%**
of the population
and contributes
40% of the
emissions

12.7 M+

The region's GHG emissions are equivalent to one year's worth of tailpipe emissions from 12.7 M+ gasoline-fueled passenger vehicles*

53.5 M

Metric Tons of Carbon Dioxide Equivalent (MTCO_{2e})

The region's current total GHG emissions

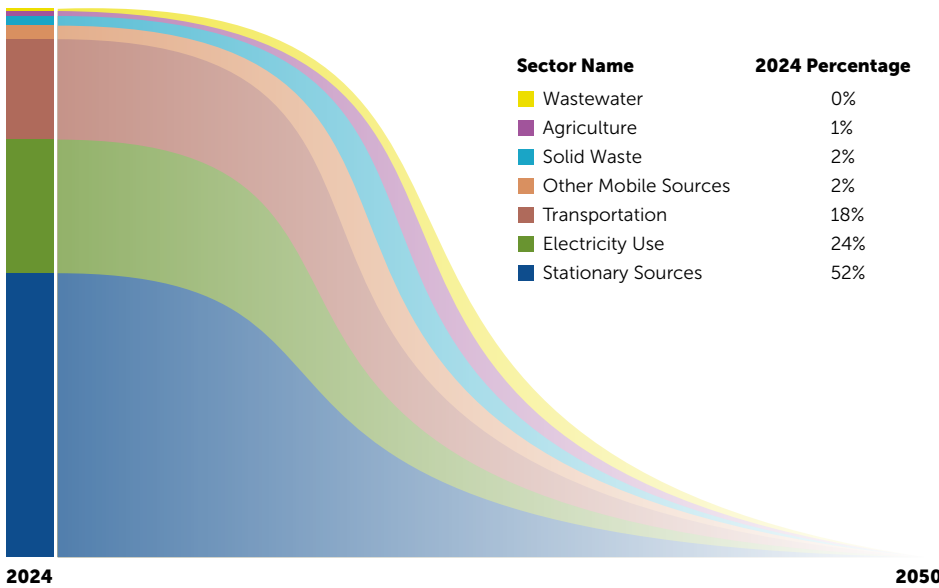
FACT SHEET

REGIONAL CLIMATE POLLUTION REDUCTION PLAN



Managing our Region's Carbon Emissions

Our region can manage carbon emissions by reducing the amount of pollution we create and by capturing and storing carbon after it has been emitted. The PCAP and CCAP identify opportunities to reduce the amount of carbon dioxide created in our region while improving economic competitiveness and quality of life. The EPA's goal is carbon neutrality by 2050.



Learn More and Get Involved Visit: spcregion.org/cprg

Make your voice heard!

Help us create a regional climate plan that will create high-quality jobs, economic growth, improved health outcomes, and improved quality of life.

facebook.com/spcregion

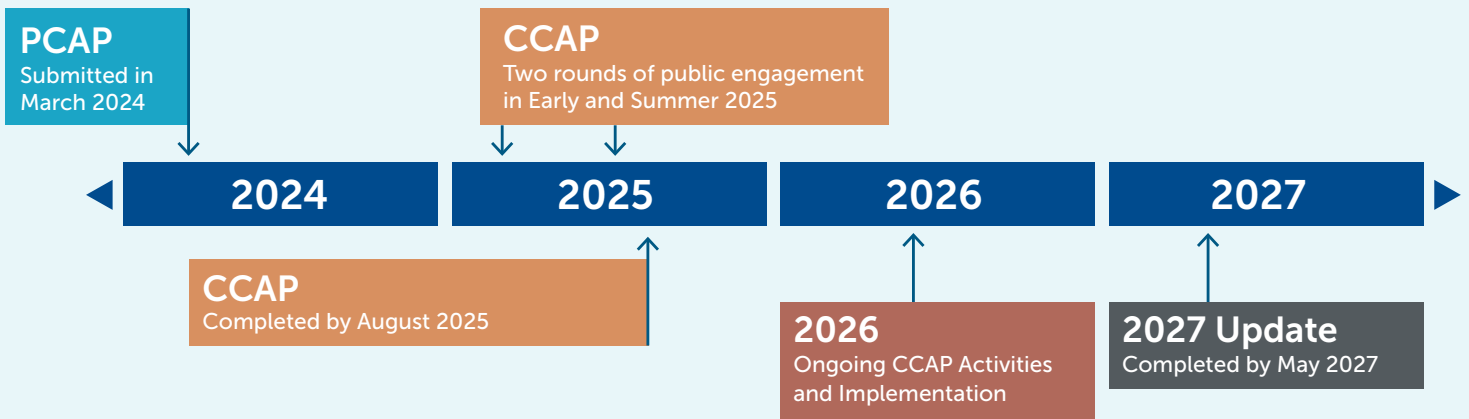
instagram.com/spcregion

x.com/spcregion

Project Contact: **Cathy Tulley**

- SPC Environmental Programs Manager
- 412.391.5990 x0376
- cprg@spcregion.org
- spcregion.org/cprg

Planning Timeline



Sources and Citations: Unless otherwise noted, data and information in this fact sheet was sourced from Southwestern Pennsylvania Regional Commission, March 1, 2024, Priority Climate Action Plan, Southwestern Pennsylvania Regional Climate Pollution Reduction Plan, spcregion.org/wp-content/uploads/2024/03/EPA-95318101-Regional-Priority-Climate-Action-Plan-for-SWPA-20240304.pdf.

*Source: U.S. Environmental Protection Agency, Jan. 2024, Greenhouse Gas Equivalencies Calculator, epa.gov/energy/greenhouse-gas-equivalencies-calculator. Assuming 10,750 miles per vehicle per year at 22.8 mpg, per SPC's travel model.

FACT SHEET

REGIONAL CLIMATE POLLUTION REDUCTION PLAN



Plan Timeline



Summer 2023	<ul style="list-style-type: none"> ○ Planning Grant Award 	SPC was awarded \$1M by the US EPA to create the Southwestern Pennsylvania Regional Climate Pollution Reduction Plan
Submitted March 1, 2024	<ul style="list-style-type: none"> ○ Priority Climate Action Plan (PCAP) 	SPC submitted to the US EPA its initial inventory of GHG emissions, emissions-reduction actions, and analysis of low-income and disadvantaged communities (LIDACs) benefits
May 2024	<ul style="list-style-type: none"> ○ Comprehensive Climate Action Plan (CCAP) process begins 	SPC is developing the CCAP which will include a comprehensive inventory of GHG emissions, emission reduction measures, workforce development benefits, LIDAC benefits analysis, and regional benefits analysis.
Early 2025	<ul style="list-style-type: none"> ○ 2024 Public Engagement – Round 1 ○ Purpose: Review the status of the PCAP and solicit feedback and comments on greenhouse gas (GHG) emissions, reduction actions, and LIDAC analysis 	Public engagement collaboratively includes individuals in decisions impacting their communities, considers their perspectives and ideas to ensure inclusiveness and address their needs. Widespread participation is encouraged. SPC will organize public meetings aimed at engaging all residents, businesses, and officials, with a particular emphasis on communities facing high environmental justice concerns.
Summer 2025	<ul style="list-style-type: none"> ○ 2025 Public Engagement – Round 2 ○ Purpose: Solicit feedback and comments on the draft CCAP 	
August 2025	<ul style="list-style-type: none"> ○ CCAP Submission Due 8/1 (two years from date of Planning Grant award) 	SPC is developing the CCAP which will include a comprehensive inventory of GHG emissions, emission reduction measures, workforce development benefits, LIDAC benefits analysis, and regional benefits analysis
June 2026	<ul style="list-style-type: none"> ○ Ongoing CCAP Activities and Implementation 	SPC will track progress made on the recommendations of the CCAP and aligned projects funded through federal, state, and local investments within the region.
May 2027	<ul style="list-style-type: none"> ○ Status Report 	

CCAP Phase

This project has been funded wholly or in part by the US EPA, under grant assistance agreement 95318101 awarded to SPC.

FACT SHEET

REGIONAL CLIMATE POLLUTION REDUCTION PLAN



Learn More and Get Involved Visit: spcregion.org/cprg

Your participation matters! Help shape the region's climate plan.

Creating high-quality jobs, economic growth, and improved health and quality of life requires your input.



facebook.com/spcregion



instagram.com/spcregion



x.com/spcregion

Project Contact: Cathy Tulley

- SPC Environmental Programs Manager
- 412.391.5990 x0376
- cprg@spcregion.org
- spcregion.org/cprg



Plan Stakeholders

The graphic below details the individuals, groups, or organizations impacted by, or involved in, development of the CCAP.

Southwestern Pennsylvania Commission (SPC)

SPC is the Metropolitan Planning Organization for the 10-county region around Pittsburgh, PA. It is governed by representatives from each of the 10 counties, the City of Pittsburgh, and other regional leaders, and is responsible for developing plans, policies, and funding allocations related to transportation and economic development.

CPRP Steering Committee (SC)

The Steering Committee for the CPRP has 12 members: one member from each of SPC's 10 counties, one from City of Pittsburgh, and one from the Pennsylvania Department of Environmental Protection. The SC provides oversight and guidance for the strategic development of the CPRP, identifies issues, and engages with stakeholders.

CPRP Regional Advisory Committee (RAC)

The RAC is a broader group of stakeholders and includes members from community-based organizations, climate-focused agencies, chambers of commerce, county organizations, and environmental justice areas. The RAC will facilitate input and dialogue during development of the CCAP and will support coordination of public outreach.

Public Stakeholders

Public Meetings will be open to all of the region's residents and interested stakeholders. Meeting invitations will be shared with members of the SC, RAC, and an expanded list of stakeholders.